

1982

Sea Drive

2.5L 1ABLCN
1ABXCN

2.6L 1AALCN
1AAXCN



SAFETY WARNING



NOTE

WHEN REPLACEMENT PARTS ARE REQUIRED, USE GENUINE OMC PARTS OR PARTS WITH EQUIVALENT CHARACTERISTICS INCLUDING TYPE, STRENGTH, AND MATERIAL. FAILURE TO DO SO MAY RESULT IN PRODUCT MALFUNCTION AND POSSIBLE INJURY TO THE OPERATOR AND/OR PASSENGERS.

OUTBOARD MARINE CORPORATION, MANUFACTURER OF OMC SEA DRIVE* MARINE POWER SYSTEM, RESERVES THE RIGHT TO MAKE CHANGES AT ANY TIME, WITHOUT NOTICE, IN SPECIFICATIONS AND MODELS AND ALSO TO DISCONTINUE MODELS. THE RIGHT IS ALSO RESERVED TO CHANGE ANY SPECIFICATIONS OR PARTS AT ANY TIME WITHOUT INCURRING ANY OBLIGATION TO EQUIP SAME ON MODELS MANUFACTURED PRIOR TO DATE OF SUCH CHANGE.

WHILE THE INFORMATION CONTAINED IN THIS PARTS CATALOG IS BASED ON THE LATEST PRODUCT INFORMATION AVAILABLE AT THE TIME OF PUBLICATION, THE CONTINUING ACCURACY OF THIS PARTS CATALOG CANNOT BE GUARANTEED.

ALL ILLUSTRATIONS USED IN THIS PARTS CATALOG MAY NOT DEPICT ACTUAL MODELS OR EQUIPMENT AND ARE INTENDED AS REPRESENTATIVE VIEWS FOR REFERENCE ONLY.



NOTE

THIS PARTS CATALOG SHOULD NOT BE USED IN LIEU OF A SERVICE MANUAL. ORDER YOUR SERVICE MANUAL OR OWNER'S MANUAL FROM YOUR NEAREST MARKETING DIVISION, SEE REAR COVER.

SUPPLY MODEL AND SERIAL NUMBER OF ENGINE FROM NAMEPLATE ATTACHED TO THE LOWER ENGINE COVER WHEN REQUESTING A SERVICE MANUAL OR OWNER'S MANUAL.

*OMC Sea Drive is a trademark of Outboard Marine Corporation

TABLE OF CONTENTS

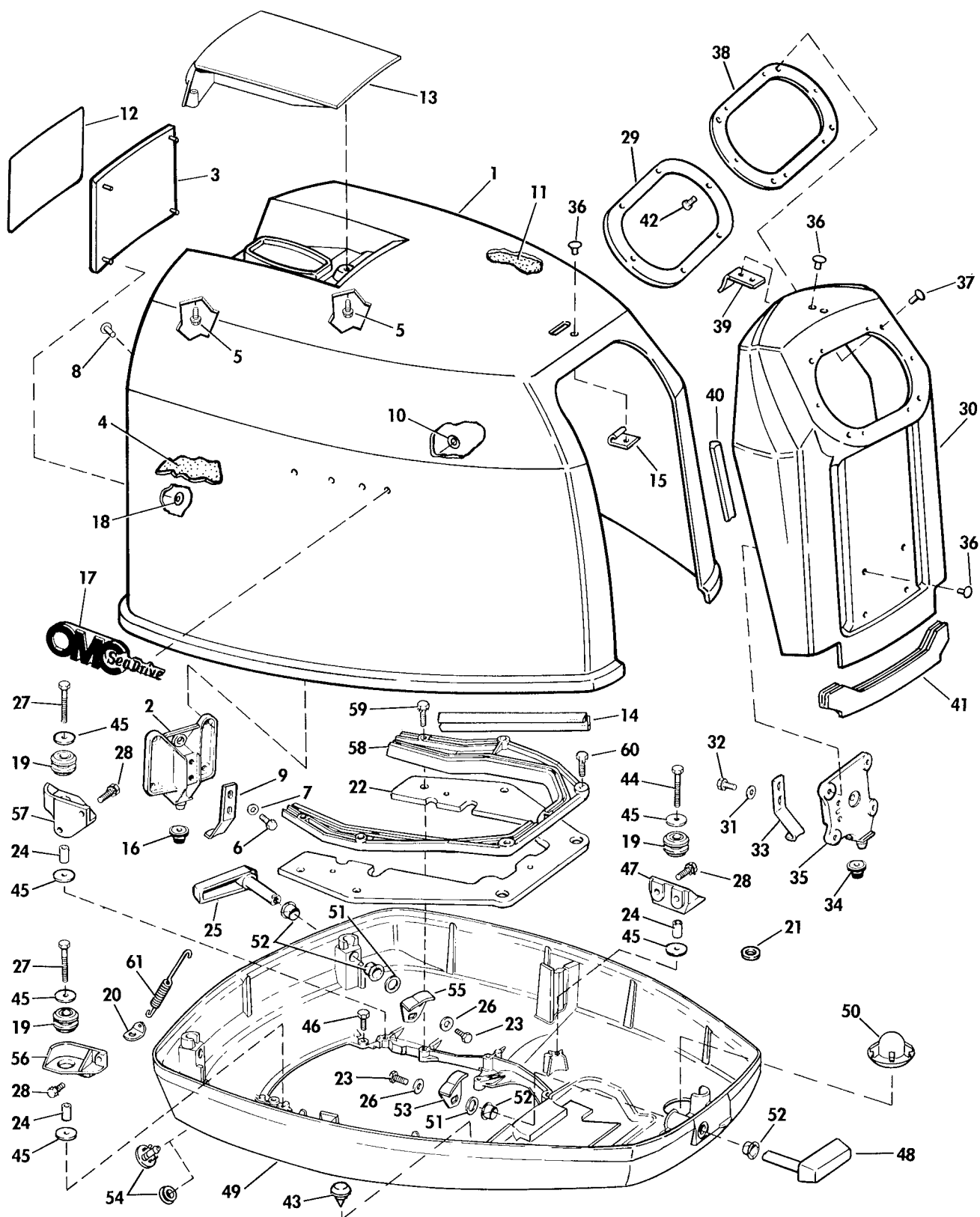
	PAGE
ENGINE COVER	4, 5
IGNITION SYSTEM	6, 7
INTAKE MANIFOLD	8, 9
FUEL PUMP	10
CRANKSHAFT & PISTON	11
CYLINDER & CRANKCASE	12, 13
EXHAUST HOUSING	14, 15
GEARCASE	16, 17
TRANSOM BRACKET, HIGH MOUNT	18, 19
TRANSOM BRACKET, LOW MOUNT	20, 21
SELECTRIM/TILT	22, 23
ELECTRIC STARTER	24
CARBURETOR	25
TRANSOM COVER	26
REMOTE CONTROLS	27-30
SELECTRIM®/TILT SWITCH	31
SELECTRIM® GAUGE & CABLE	31
EXTENSION HARNESS - INSTRUMENTS	31
SECOND STATION CABLE KIT	32
SECOND STATION CABLE KIT INSTRUMENTS	32
EXTENSION CABLE - TRIM	32
TACHOMETER - FLUSH MOUNT QUARTACH™	33
TACHOMETER KIT - PLUG IN	33
WATER PRESSURE GAUGE KIT	33
FUEL GAUGE KIT	34
SPEEDOMETER LIGHT	34
SPEEDOMETER KIT - FLUSH MOUNT	34
VOLTMETER KIT	34
TIME INDICATOR KIT	34
CLOCK KIT	35
CAUTION PLATE KIT	35
DECK PLATE, REMOTE OIL FILL	35
OMC SNAP-IN™ CABLES	35
OMC ECONOMIXER™	36
MOUNT KIT, ECONOMIXER™	37
WIRING KIT - SINGLE LEVER	37
AIR INLET KIT	38
SPRAY PLATE KIT	38
ELECTRIC PRIMER PUMP	38
ECONOMIXER™ STATUS INDICATOR, SECOND STATION	39
SHIFT ASSIST KIT	39
 Paint Touch-Up Kit ("G Models")	 174031
Paint Touch-Up Kit ("C & F Models")	174032

INDENTED PART NAMES INDICATE THAT THESE PARTS ARE INCLUDED IN PRECEDING ASSEMBLY

SPECIFY MODEL AND SERIAL NUMBER OF ENGINE WHEN ORDERING PARTS

ORDER ALL PARTS FROM YOUR LOCAL AUTHORIZED DEALER

ENGINE COVER



824193

ENGINE COVER

SD0131

REF NO	PART NO	NAME OF PART	QTY PER ASSY	REF NO	PART NO	NAME OF PART	QTY PER ASSY
1	983051	ENGINE COVER ASSY , 2 6 only ① ②	1	30	982980	FACE PLATE ASSY , Engine cover 2 6 ① ②	1
1	983234	ENGINE COVER ASSY , 2 6 only ③	1	30	983200	FACE PLATE ASSY , Engine cover 2 6 ③	1
1	983234	ENGINE COVER ASSY , 2 5 only	1	30	983200	FACE PLATE ASSY , Engine cover 2 5	1
2	389972	LOCATING BRACKET, Rear	2	31	306407	WASHER, Hook to bracket	2
3	910679	APPLIQUE, Engine cover rear	1	32	319137	SCREW, Hook to bracket	2
4	910668	SOUND BLANKET, Side	1	33	323175	HOOK, Locating bracket	1
5	323229	SCREW, Tilt handle, front	1	34	324898	BUMPER, Locating bracket	1
5	323228	SCREW, Tilt handle, rear	2	35	389971	LOCATING BRACKET, Front	1
6	319137	SCREW, Hook	4	36	326948	RIVET, Locating bracket	6
7	306407	WASHER, Hook	4	37	910659	RIVET, Mounting ring	4
8	326948	RIVET, Locating bracket	9	38	910794	MOUNTING RING, Bellows	1
9	323176	HOOK, Rear cover	2	39	910802	HOOK, Face plate	1
10	317223	FASTENER, Applique	8	40	910803	SEAL, Face plate to rear cover	1
11	209445	SOUND BLANKET, Top	1	41	910804	SEAL, Face plate to lower cover	1
12	910782	PLATE, Applique 2 6 model	1	42	311504	SCREW, Plate	6
12	910825	PLATE, Applique 2 5 model	1	43	910683	DRAIN VALVE, 2 6 ① ②	2
13	208208	TILT HANDLE	1	44	302030	SCREW, Front mount	1
14	910757	SEAL, Engine cover	1	45	302407	WASHER, Mount, large	6
15	910745	WEAR PLATE	1	46	323480	SCREW, Lower cover	2
16	324898	BUMPER, Locating bracket	2	47	315111	SUPPORT, Front	1
17	910730	APPLIQUE, Port & star, 2 6 only ① ②	2	48	383641	LATCH HANDLE ASSY , Front	1
17	911093	APPLIQUE, Port & star, 2 6 only ③	1	49	983238	ENGINE COVER, Lower	1
17	911093	APPLIQUE, Port & star, 2 5 only	1	50	983237	VENT & DRAIN VALVE	2
18	204476	FASTENER, Applique, rear	4	51	313219	WASHER, Screw hook	3
19	911123	GROMMET, Engine cover	3	52	308532	BUSHING	6
20	910864	ANCHOR, Spring, latch	2	53	323170	HOOK, Front and stbd , rear	2
21	317922	SEAL, Engine cover to shift rod	1	54	321885	NIPPLE, Lower engine cover 2 6 ①	1
22	911102	SEAL, Frame to lower cover	1	54	320521	GROMMET, Drain 2 6 ② ③	1
23	552062	SCREW, Handle to latch	3	54	320521	GROMMET, Drain 2 5	1
24	302406	SLEEVE, Mount	3	55	323169	HOOK, Lower rear port	1
25	383685	LATCH HANDLE ASSY , Rear	2	56	315113	SUPPORT, Stbd , rear	1
26	304051	WASHER, Screw hook	3	57	315112	SUPPORT, Port, rear	1
27	302030	SCREW, Mount, rear	2	58	327668	FRAME ASSY	1
28	323480	SCREW, Supports	6	59	302288	SCREW, Frame	4
29	910795	RETAINING PLATE, Bellows	1	60	323480	SCREW, Frame, front	2
				61	910868	SPRING, Latch	2
				*	983210	OWNERS MANUAL	1

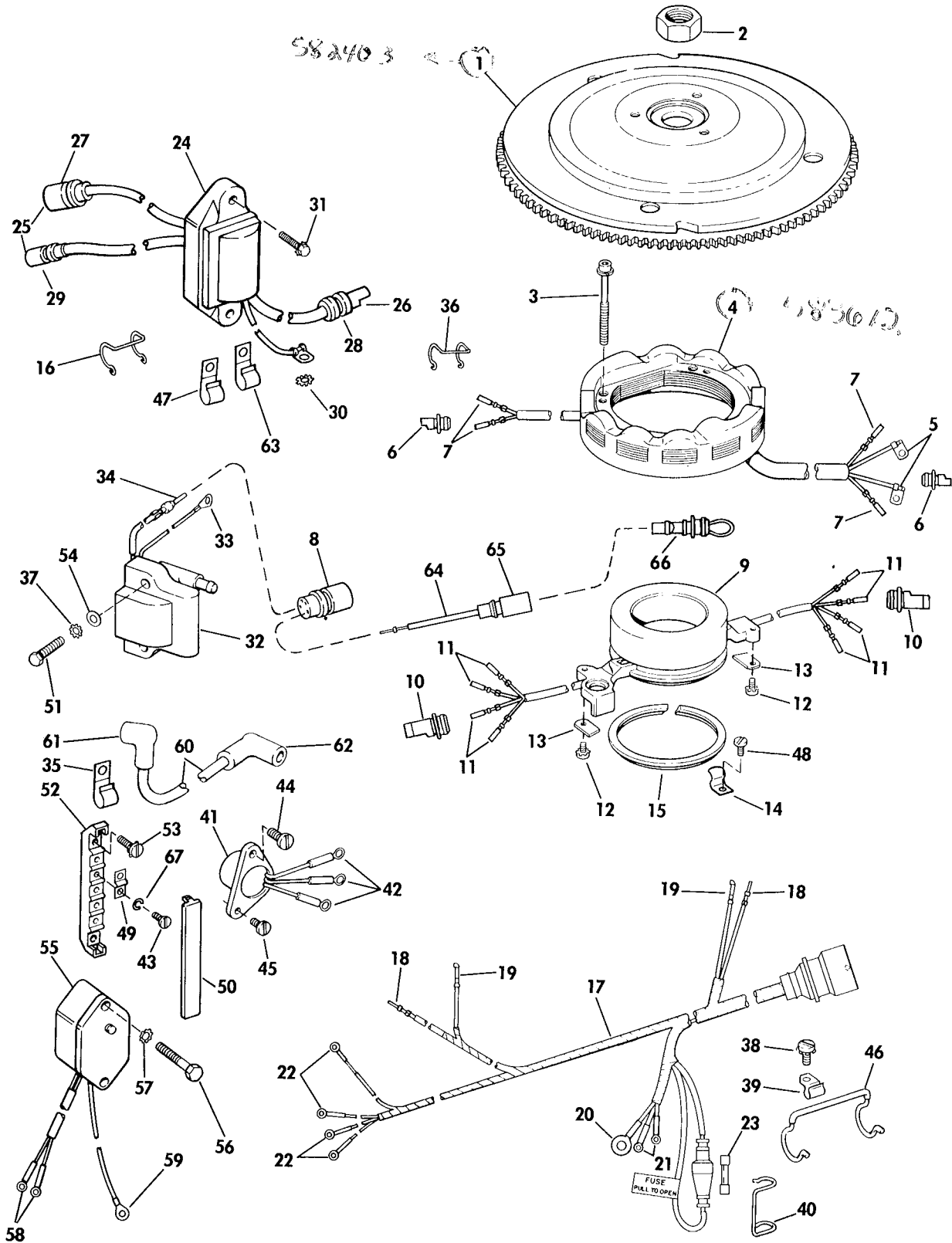
* Not Shown

① Models with "C" Model Number Suffix

② Models with "G" Model Number Suffix

③ Models with "F" Model Number Suffix

IGNITION SYSTEM



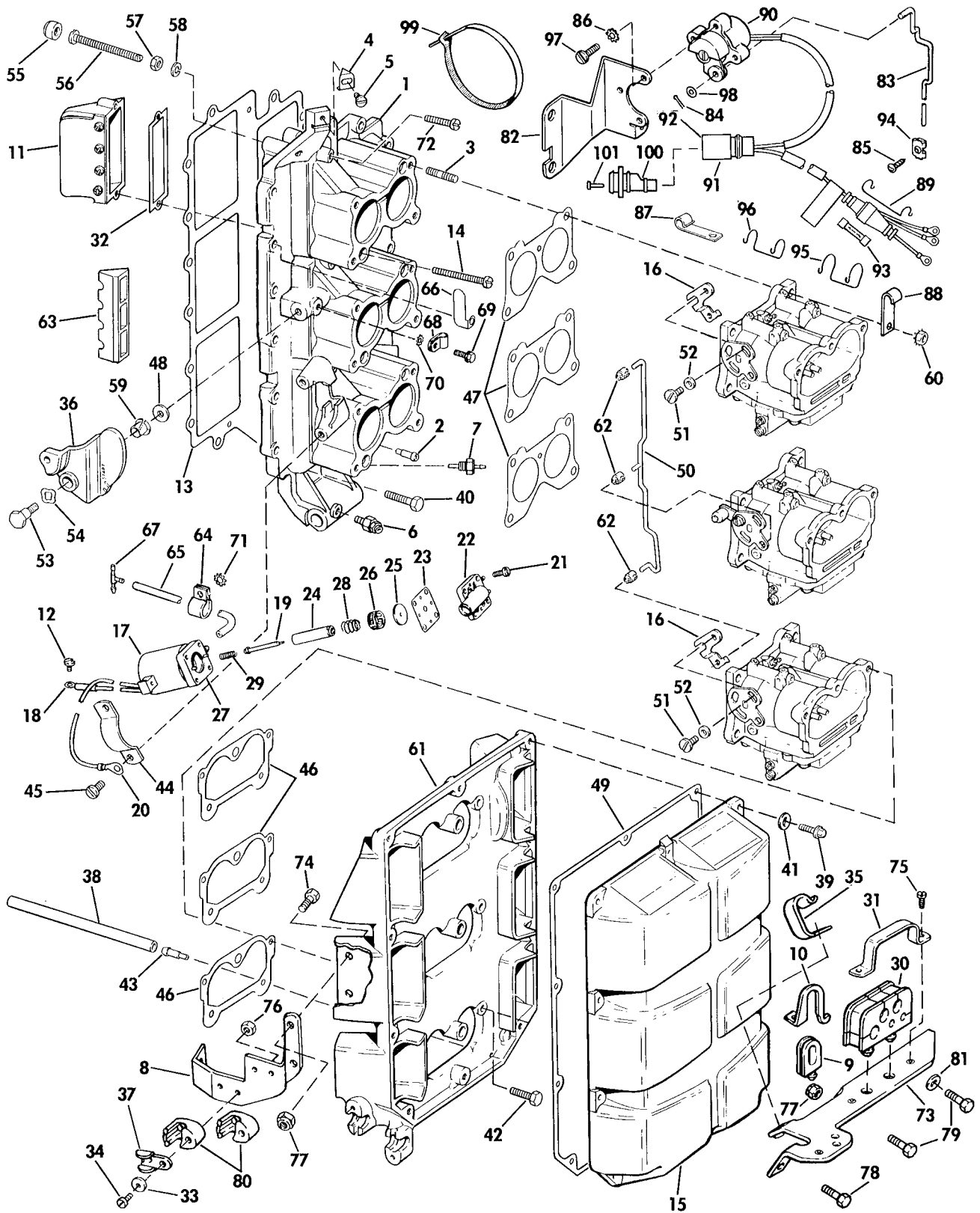
824175

IGNITION SYSTEM

SD0132

REF NO	PART NO	NAME OF PART	QTY PER ASSY	REF NO	PART NO	NAME OF PART	QTY PER ASSY
1	582443	FLYWHEEL ASSY	1	33	510767	RING TERMINAL	1
2	316828	NUT, Flywheel	1	34	511469	PIN	1
3	325135	SCREW, Stator mounting	4	35	309322	CLAMP, High tension lead	9
4	582497	STATOR ASSY , 10 amp	1	36	511618	RETAINER, Stator connector	2
5	511399	TERMINAL	2	37	306488	LOCKWASHER, Ground	6
6	511989	CONNECTOR	2	38	303311	SCREW, Cable spring	1
7	581656	SOCKET	4	39	326365	CLAMP, Spring, engine cable	1
8	511449	CONNECTOR, Coil to power pack	2	40	321077	RETAINER, Fuse holder	1
9	582394	TIMER BASE & SENSOR ASSY	1	41	582399	RECTIFIER & LEAD ASSY	1
10	511991	CONNECTOR	2	42	511733	RING TERMINAL	3
11	581656	SOCKET	8	43	327785	SCREW, Terminal block	5
12	307019	SCREW	2	44	314576	SCREW, Rectifier mounting	1
13	511387	CLAMP, Leads	2	45	552421	SCREW, Rectifier mounting	1
14	326439	CLAMP, Timer base	4	46	315182	CLAMP	1
15	313666	RETAINER, Timer base	1	47	310493	CLAMP, Power pack connector	5
16	322549	RETAINER, Connector, power pack	4	48	302812	SCREW, Retainer clamp	4
17	389452	ENGINE CABLE ASSY	1	49	315004	JUMPER	1
18	511469	PIN	2	50	983166	COVER ASSY	1
19	308808	KNIFE DISCONNECT	2	51	323795	SCREW, Coil mounting	12
20	204053	RING TERMINAL	1	52	326255	TERMINAL BLOCK	1
21	204036	RING TERMINAL	2	53	510195	SCREW, Block to bracket	2
22	510780	RING TERMINAL	4	54	306407	WASHER, Ignition coil mounting	12
23	510884	FUSE, 20 amp	1	55	173640	VOLTAGE REGULATOR ASSY	1
24	582642	POWER PACK	2	56	304913	SCREW, Mounting	2
25	511469	PIN	6	57	306488	LOCKWASHER	2
26	581656	SOCKET	4	58	510780	TERMINAL	2
27	511449	CONNECTOR	1	59	510818	TERMINAL	1
28	511991	CONNECTOR	1	60	582365	LEAD ASSY , Ignition coil	6
29	511616	CONNECTOR	1	61	581027	TERMINAL & COVER	1
30	303480	LOCKWASHER, Power pack to ground	2	62	580339	TERMINAL & COVER	1
31	323796	SCREW, Power pack to cylinder	4	63	311339	CLAMP, Connector	3
32	582106	COIL ASSY	6	64	173924	CONNECTOR & LEAD, Jumper	1
				65	511616	CONNECTOR	1
				66	983164	CONNECTOR & JUMPER LEAD	1
				67	120052	LOCKWASHER	5

INTAKE MANIFOLD



824167

INTAKE MANIFOLD

SD0133

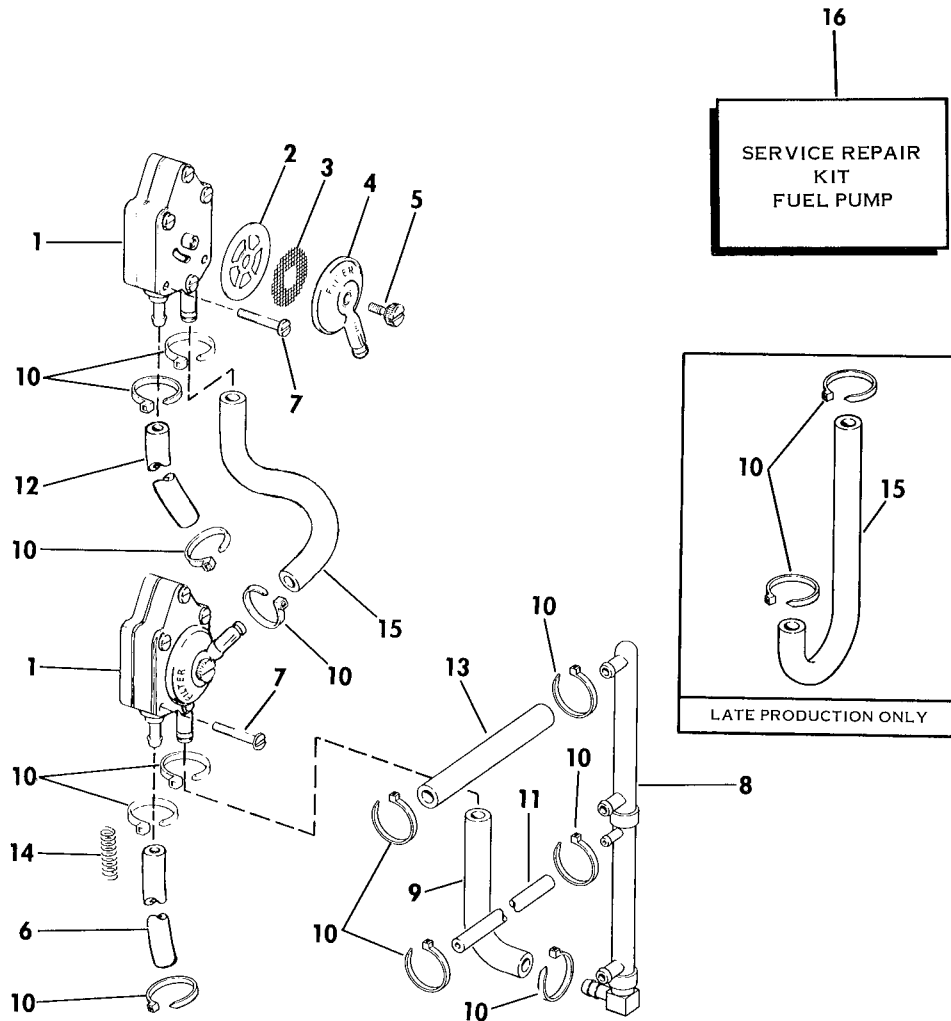
REF NO	PART NO	NAME OF PART	QTY PER ASSY	REF NO	PART NO	NAME OF PART	QTY PER ASSY
1	390440	INTAKE MANIFOLD ASSEMBLY	1	52	306547	WASHER, Lever screw	2
2	325659	NIPPLE	1	53	316037	SCREW, Cam to intake	1
3	314956	STUD	12	54	204445	WAVE WASHER, Cam to intake	1
4	318174	TIMING POINTER, Manifold	1	55	314416	BUMPER, Adj screw	1
5	303737	SCREW, Timing pointer	1	56	317615	SCREW, Spark adjustment	1
6	319253	LUBE FITTING	1	57	304753	NUT, Screw, spark adjustment	1
7	390436	CHECK VALVE & FILTER	6	58	306396	LOCKWASHER	1
8	910723	BRACKET, Anchor block mounting	1	59	311015	BUSHING, Throttle cam	1
9	910744	GROMMET, Control cables	1	60	316291	NUT	12
10	910724	RETAINER, Grommet	1	61	911090	BASE, Air silencer	1
11	389823	LEAF PLATE ASSY	6	62	313329	RETAINER, Carburetor link	3
12	319603	SCREW, Terminal to primer solenoid	1	63	322722	FILLER BLOCK, 2 6 only	6
13	321198	GASKET, Manifold to c'case	1	64	317000	CLAMP, Hoses, primer solenoid	2
14	313217	SCREW	6	65	**	HOSE, Primer solenoid system	AR
15	387871	COVER, Air silencer	1	66	325563	RETAINER, Hose to intake manifold	2
16	320575	ADJ LEVER, Throttle link	2	67	325569	CONNECTOR, Primer hose	1
17	582401	SOLENOID ASSY, Primer	1	68	325637	CLAMP, Hose, intake manifold	1
18	510780	TERMINAL	1	69	315287	SCREW, Clamp, intake manifold	1
19	511988	VALVE, Plunger	1	70	303701	LOCKWASHER, Clamp	1
20	510818	TERMINAL	1	71	303480	LOCKWASHER	2
21	326186	SCREW, Cover to housing	4	72	133451	SCREW, Leaf plate to manifold, short	6
22	512119	COVER, Primer solenoid	1	73	983013	SUPPORT BRACKET ASSY	1
23	511808	GASKET, Solenoid	1	74	909636	SCREW, Bracket mounting	2
24	511809	PLUNGER	1	75	319547	SCREW, Clamps to bracket	3
25	511810	VALVE SEAT	1	76	121470	NUT, Anchor block to bracket	2
26	511811	FILTER, Valve housing	1	77	313022	LOCKNUT, Bracket to silencer base	4
27	511806	HOUSING	1	78	306049	SCREW, Cover	1
28	511986	SPRING, Valve	1	79	306778	SCREW, Silencer cover & support bracket	2
29	511987	SPRING, Plunger	1	80	310685	ANCHOR BLOCK	2
*	983193	GROMMET AND CLAMP, Fuel hose & wire harness	1	81	306358	WASHER, Silencer cover & support bracket	2
30	911056	GROMMET	1	82	123946	BRACKET, Rheostat	1
31	910829	CLAMP, Grommet	1	83	123948	LINK, Rheostat	1
32	321907	GASKET, Leaf plate	6	84	303590	COTTER PIN	1
33	306015	SPACER, Anchor block	2	85	303686	SCREW, Fastener	1
34	320504	SCREW, Bracket to anchor block	2	86	303701	LOCKWASHER, Rheostat to bracket	1
35	323492	CLAMP, Remote control and throttle cables to bracket	1	87	310439	CLAMP, Cable	1
36	326170	THROTTLE CAM	1	88	310493	CLAMP, Cable	1
37	909790	SPRING, Detent	2	89	321077	RETAINER, Fuse holder	1
38	#	HOSE, Air silencer	1	90	173846	RHEOSTAT, Fuse & lead	1
39	308742	SCREW, Cover to base	7	91	511449	CONNECTOR	1
40	306418	SCREW, Manifold to c'case	16	92	511469	PIN	4
41	304051	WASHER, Cover to base	9	93	124127	FUSE	1
42	323480	SCREW, Air silencer base	6	94	318974	FASTENER, Carb link	1
43	314513	NIPPLE, Air silencer base	1	95	322549	RETAINER, Cables	4
44	321218	CLAMP, Primer solenoid	1	96	511618	RETAINER, Cables	1
45	308762	SCREW, Clamp primer solenoid	2	97	315656	SCREW, Rheostat to bracket	1
46	319771	GASKET, Air silencer	3	98	314174	WASHER	1
47	327707	GASKET, Carb to manifold	3	99	320107	TIE STRAP	2
48	313079	WASHER, Cam to manifold	1	100	511991	CONNECTOR	1
49	321183	GASKET, Cover	1	101	511496	PLUG	4
50	387378	LINK AND PIN, Throttle arm	1				
51	302812	SCREW, Lever to carb	2				

Cut from 203909

* Not Shown

** Use 326449 Cut to Length

FUEL PUMP



SD0227

814084

REF NO	PART NO	NAME OF PART	QTY PER ASSY	REF NO	PART NO	NAME OF PART	QTY PER ASSY
1	392632	FUEL PUMP ASSY , Upper ①	1	9	324078	HOSE, Lower pump to manifold	1
1	389440	FUEL PUMP ASSY , Lower ①	1	10	320107	CLAMP STRAP, Hose	17
1	393646	FUEL PUMP ASSY , Upper ①	1	11	•#	HOSE, Fuel manifold to primer solenoid, 6-3/4"	1
1	393650	FUEL PUMP ASSY , Lower ①	1	12	322762	HOSE, Pump to crankcase	1
2	312679	GASKET, Cap to pump	1	13	325663	HOSE, Carburetor to manifold	3
3	312675	SCREEN, Filter	1	14	315942	SPRING	1
4	322759	CAP, Filter	1	15	*	HOSE, Upper to lower pump ②	1
5	312677	SCREW, Cap	1	15	324866	HOSE, Upper to lower pump ③	1
6	**	HOSE, Pump to crankcase, 5-1/4"	1	16	393103	FUEL PUMP REPAIR KIT ④	1
7	308777	SCREW, Pump mounting	4	16	393867	FUEL PUMP REPAIR KIT ⑤	1
8	390466	FUEL MANIFOLD ASSY	1				

* Cut from 319719, 25 ft roll

** Use 309364 Cut to Length

•# Use 319733 Cut to Length

① Replace With Part No Stamped on Existing Fuel Pump

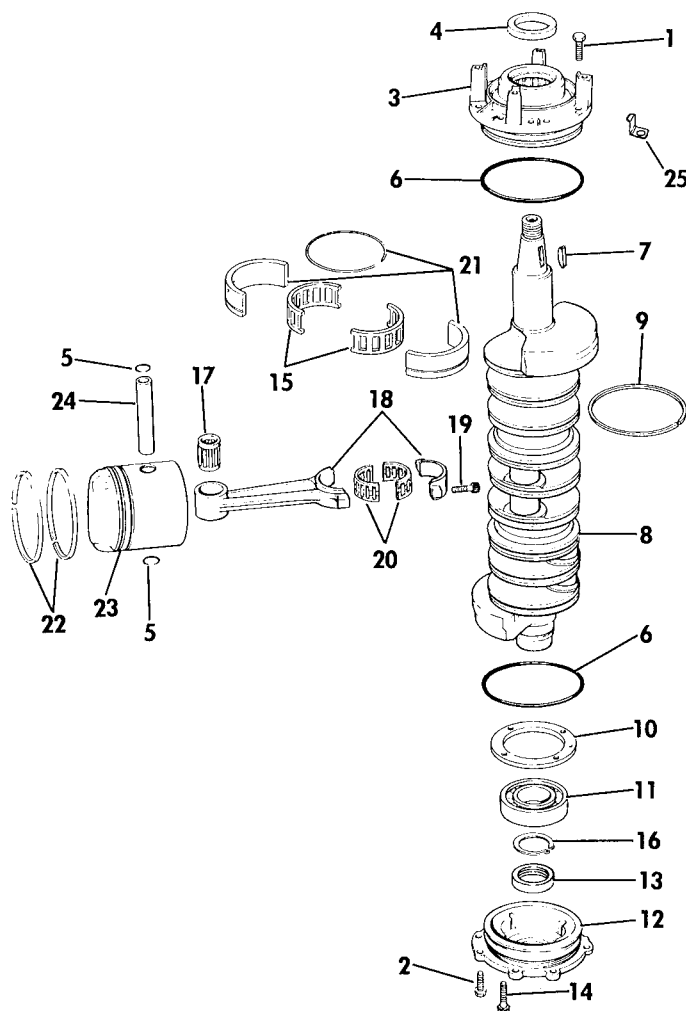
② Early Production With Straight Hose

③ Late Production With Curved Molded Hose

④ Use For Fuel Pump Stamped With Part No 392632 or 389440

⑤ Use For Fuel Pump Stamped With Part No 393646 or 393650

CRANKSHAFT & PISTON



92073

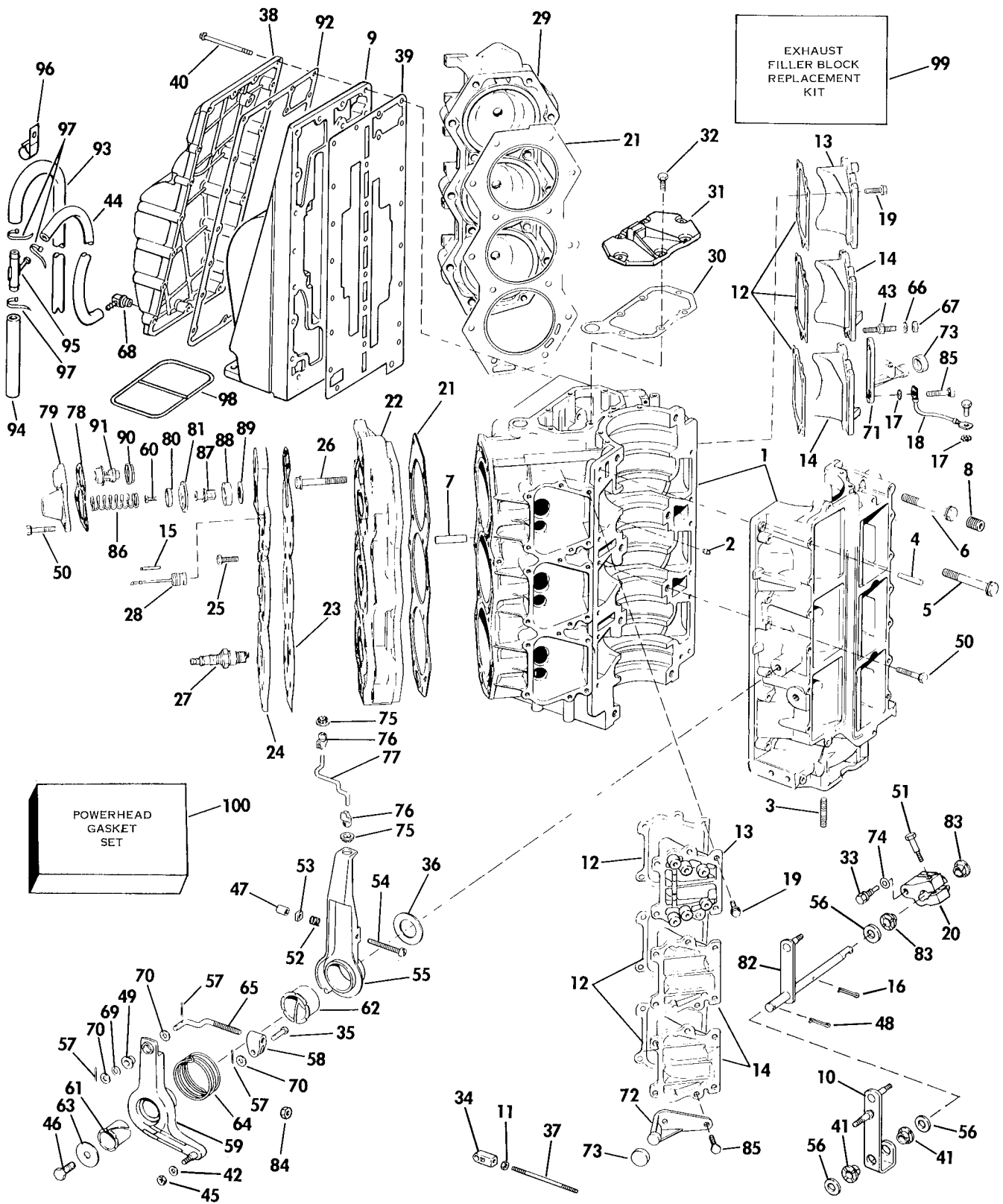
SD0226

REF NO	PART NO	NAME OF PART	QTY PER ASSY	REF NO	PART NO	NAME OF PART	QTY PER ASSY
1	306049	SCREW, Crankcase head upper	4	15	387041	RETAINER & NEEDLE SET	2
2	308742	SCREW, Crankcase head	8	16	308213	RING, Retaining, bearing	1
3	387432	CRANKCASE HEAD AND BRG ASSY	1	17	388595	BEARING, Wrist pin	6
4	322575	SEAL, Upper	1	18	392591	CONNECTING ROD ASSY	6
5	317831	RETAINING RING	12	19	308186	SCREW, Rod cap	2
6	305123	O-RING	4	20	387787	RETAINER SET	6
7	307480	KEY, Flywheel	1	21	320499	SPLIT SLEEVE, Center bearing	2
8	388306	CRANKSHAFT ASSY	1	22	385661	RING SET, Std, 2 5 only	6
*9	319244	SEAL RING, One stripe	AR	22	390509	RING SET, Std, 2 6 only	6
*9	319250	SEAL RING, Two stripes	AR	22	385663	RING SET, 030 2 5 only	6
*9	319197	SEAL RING, Three stripes	AR	22	390510	RING SET, 030 2 6 only	6
*9	324817	SEAL RING, 4 white stripes	AR	23	392888	PISTON, Std, 2 5 only	6
10	317762	PLATE, Lower bearing	1	23	392455	PISTON, Std, 2 6 only	6
11	385503	BEARING, Ball	1	23	392903	PISTON, 030, 2 5 only	6
12	385502	CRANKCASE HEAD ASSY	1	23	394066	PISTON, 030, 2 6 only	6
13	321668	SEAL	1	24	327861	WRIST PIN	6
14	317763	SCREW, Plate	4	25	326439	CLAMP, Retainer to crankcase head	4

* These seal rings are gauge fitted, replace according to stripe code

CYLINDER & CRANKCASE

#21 2.6 Ltr 335361
HEAD GASKET



834003

CYLINDER & CRANKCASE

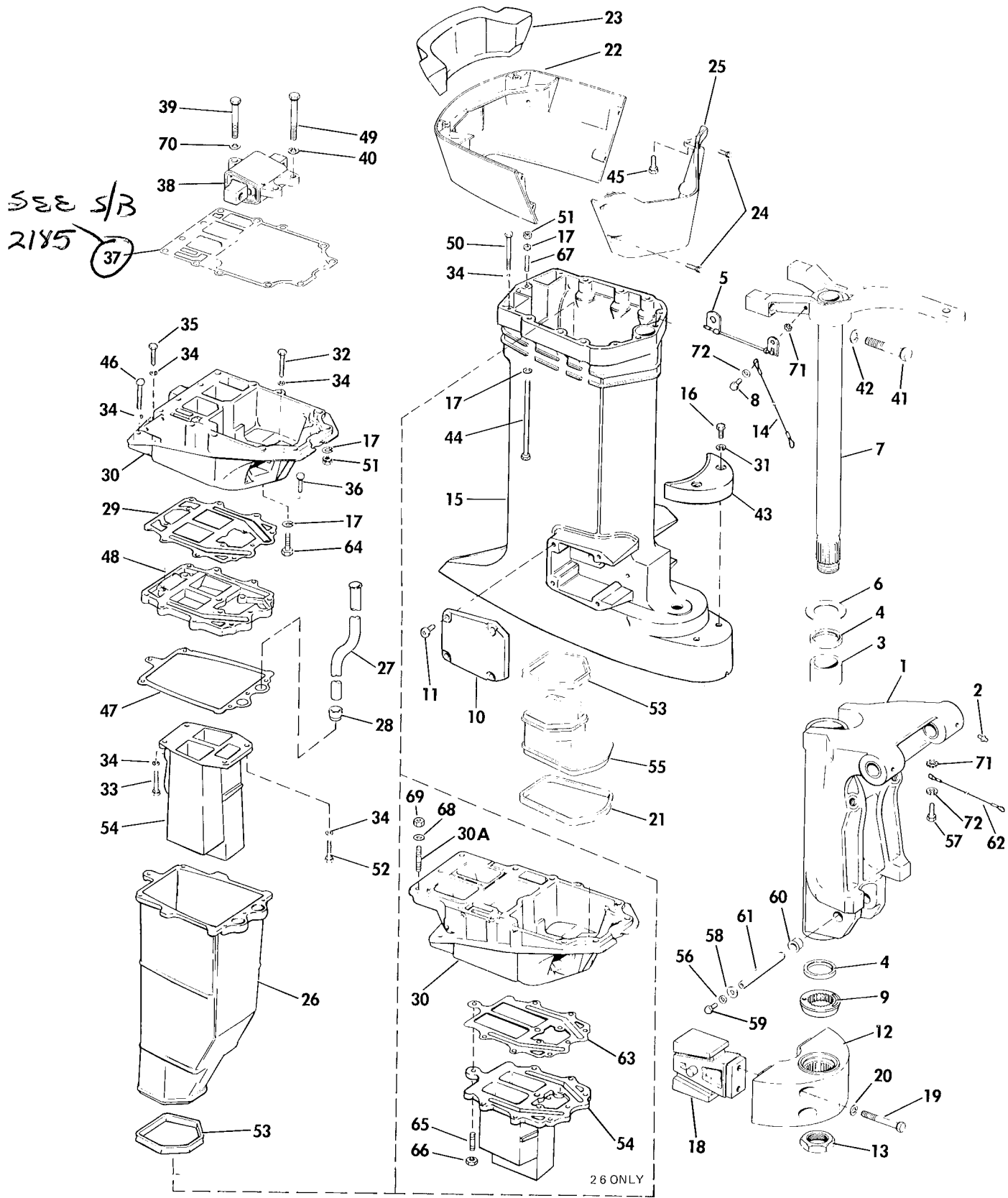
SD0136

REF NO	PART NO	NAME OF PART	QTY PER ASSY	REF NO	PART NO	NAME OF PART	QTY PER ASSY
1	392875	CYLINDER C'CASE ASSY , 2 5 only	1	44	911118	HOSE, Elbow to tee, 2 5	1
•1	392490	CYLINDER C'CASE ASSY , 2 6 only	1	45	328064	NUT, Casing guide to throttle arm & shift lever	4
□1	393235	CYLINDER C'CASE ASSY , 2 6 only	1	46	306834	BOLT, Throttle lever retainer	1
2	304178	PIN, Dowel bearing	2	47	318660	CAP	1
3	314616	STUD	4	48	306387	COTTER PIN, Shift lever	1
4	305070	PIN, Taper	2	49	314125	BUSHING, Link	1
5	316988	SCREW	8	50	306778	SCREW	20
6	316988	SCREW, Lockplate cyl to c'case	8	51	321527	SCREW, Lever shift rod	1
7	322411	DEFLECTOR, Water passage	6	52	308993	SPRING, Idle adjust	1
8	327323	INSERT	6	53	203688	NUT, Idle adjust	1
9	326308	EXH COVER, Inner 2 5 only	1	54	328065	SCREW, Idle adjust	1
9	323215	EXH COVER, Inner 2 6 only	1	55	320836	LEVER, Spark advance	1
10	982978	THROTTLE ACTUATOR ASSY	1	56	202026	WASHER, Shift lever	3
11	309485	JAM NUT	2	57	305650	COTTER PIN	3
12	307133	GASKET, Bypass cover	6	58	310524	YOKE, Throttle cam	1
13	392861	COVER, Bypass, upper	2	59	983031	LEVER, Throttle	1
14	392860	COVER, Bypass, middle & lower	4	60	306643	SCREW, Seal to valve	2
15	303806	TUBING	2	61	320811	BUSHING	1
16	306387	COTTER PIN, Shift lever	1	62	320812	BUSHING, Spark lever	1
17	303480	LOCKWASHER, Ground strap	4	63	306124	WASHER, Throttle lever	1
18	376349	STRAP, Ground	1	64	321270	SPRING, Throttle lever	1
19	306049	SCREW, Bypass cover	31	65	320951	ROD, Throttle lever to cam	1
20	326644	LEVER, Shift rod	1	66	303480	LOCKWASHER, Bolt double end	2
21	320745	GASKET, Cylinder head, 2 5 only	2	67	301472	NUT, Double end bolt, bypass cover	2
21	325647	GASKET, Cylinder head, 2 6 only	2	68	321886	ELBOW, Indicator	1
22	328325	CYLINDER HEAD, Stbd , 2 5 only	1	69	204757	SPRING WASHER	1
•22	327125	CYLINDER HEAD, Stbd , 2 6 only	1	70	302474	WASHER, Link	3
□22	328327	CYLINDER HEAD, Stbd , 2 6 only	1	71	319217	SUPPORT BRACE, Port	1
23	321028	GASKET, Cover	2	72	319218	SUPPORT BRACE, Starboard	1
24	320840	COVER, Cylinder head	2	73	313581	BUMPER, Support brace	2
25	306409	SCREW, Cylinder head cover	40	74	302290	WASHER, Pin, Lever	1
26	307267	SCREW, Cylinder head	28	75	313700	SOCKET, Linkage	2
27	384771	SPARK PLUG, Champion UL-77V	6	76	313703	BALL, Socket linkage	2
28	386686	TEMPERATURE SWITCH	2	77	320950	ROD, Spark advance	1
29	328324	CYL HEAD, Port, 2 5 only	1	78	321184	GASKET, Thermostat cover	2
•29	327124	CYL HEAD, Port, 2 6 only	1	79	321013	COVER, Thermostat	2
□29	328326	CYL HEAD, Port, 2 6 only	1	80	321220	RETAINER, Spring valve	2
30	322858	GASKET, Water passage cover	1	81	321221	SEAL, Pressure release valve	2
31	323896	COVER, Water passage	1	82	982976	SHIFT LEVER	1
32	306049	SCREW, Water passage cover	6	83	312708	BUSHING, Shift lever	2
33	327590	PIN, Shift rod lever	1	84	301472	NUT, Rod, lever to cam	1
34	910793	ROD END, Throttle link	2	85	306418	SCREW, Support bracket to bypass cover	4
35	310525	PIN, Throttle cam to yoke	1	86	317245	SPRING, Pressure release valve	2
36	320813	WASHER, Spark advance lever	1	87	321027	VALVE, Pressure release	2
37	910792	ROD, Throttle link	1	88	320880	SEAT, Valve	2
38	323213	COVER, Exhaust outer, 2 6 only	1	89	321222	CUP, Valve seat	2
38	323360	COVER, Exhaust outer, 2 5 only	1	90	310058	GROMMET, Thermostat	2
39	321182	GASKET, Inner cover, 2 5 only	1	91	378065	THERMOSTAT ASSY	2
39	328770	GASKET, Inner cover, 2 6 only	2	92	323217	GASKET, Cover to manifold, 2 6 only	1
40	302030	SCREW, Exh manf to cyl , 1-1/4" long, 2 5 only	28	93	911119	HOSE, Tee to lower cover, 2 6 "G&F" models, all 2 5	1
40	323218	SCREW, Exh manf to cyl , 5" long, 2 6 only	6	94	911120	HOSE, Tee to grommet, 2 5, 2 6 "G&F" models	1
40	909533	SCREW, Exh manf to cyl , 1" long, 2 6 only	2	95	911103	TEE, 2 6 "G&F" models, all 2 5	1
40	319126	SCREW, Exh manf to cyl , 1-3/8" long, 2 6 only	4	96	311339	CLAMP, Cover, 2 6 "G&F" models, all 2 5	1
40	323626	SCREW, Exh manf to cyl , 1-7/8" long, 2 6 only	6	97	318322	CLAMP, Strap, hose 2 6 "G&F" models, all 2 5	3
40	317972	SCREW, Exh manf to cyl , 4-1/4" long, 2 6 only	6	98	323125	SEAL, Exhaust manifold, 2 6 only	1
40	324424	SCREW, Exh manf to cyl , 2-5/8" long, 2 6 only	4	99	392001	EXHAUST FILLER BLOCK REPLACEMENT KIT, 2 6 only	1
41	312708	BUSHING, Throttle lever	2	100	391988	POWERHEAD GASKET SET, 2 5 only	1
42	306561	WASHER, Shift & throttle lever	4	100	391989	POWERHEAD GASKET SET, 2 6 only	1
43	322068	BOLT, Double end, bypass cover	1				
•44	327720	HOSE, Elbow to nipple 2 6 only	1				
□44	911118	HOSE, Elbow to tee, 2 6	1				

• Models With "C" Model Number Suffix

□ Models With "G and F" Model Number Suffix

EXHAUST HOUSING



834004

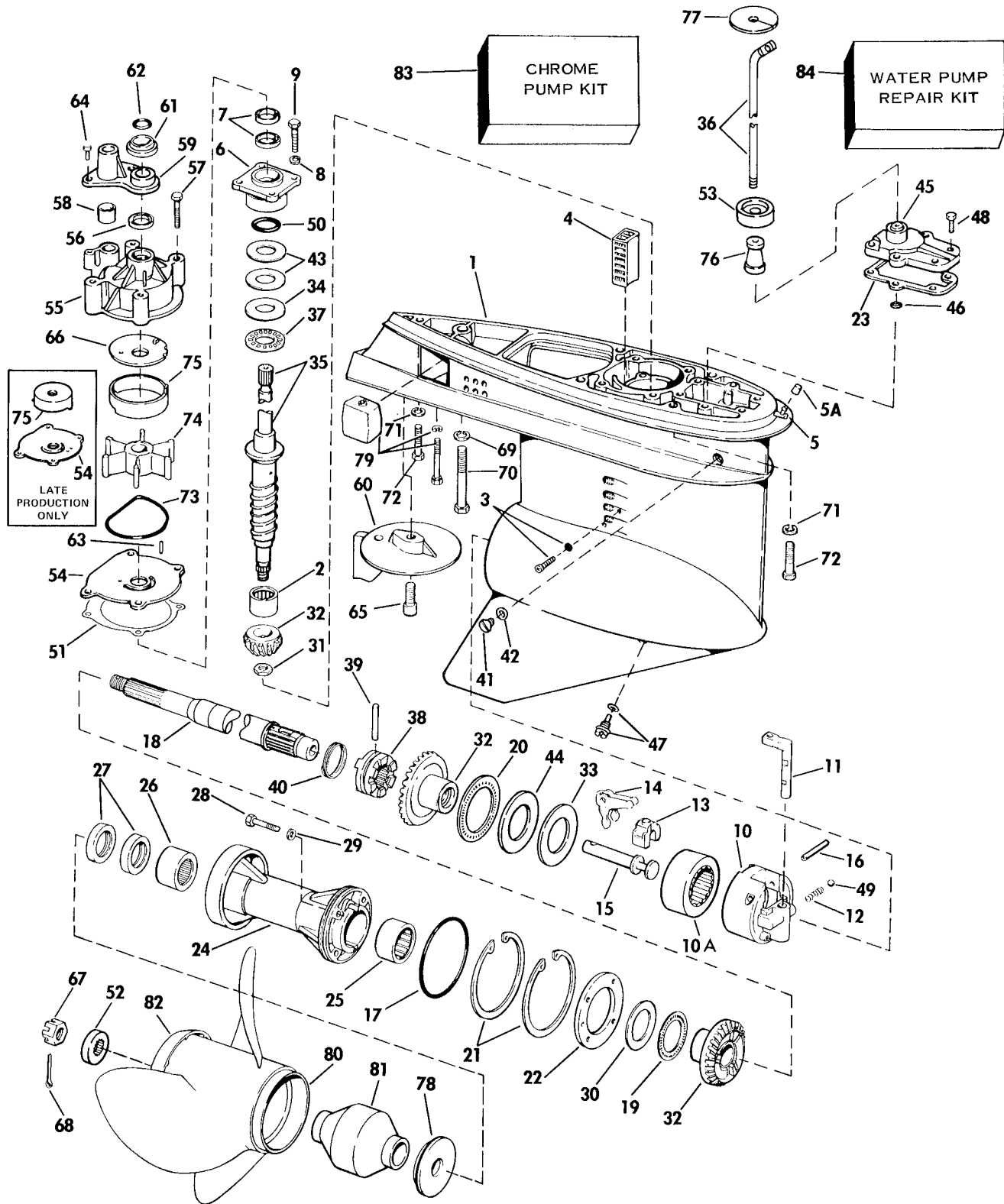
EXHAUST HOUSING

SD0137

REF NO	PART NO	NAME OF PART	QTY PER ASSY	REF NO	PART NO	NAME OF PART	QTY PER ASSY
●1	983249	SWIVEL BRACKET	1	37	323214	GASKET, Adapter to powerhead	1
□1	983250	SWIVEL BRACKET	1	38	387098	RUBBER MOUNT ASSY , Upper	1
2	313607	LUBRICATION FITTING	3	39	911042	SCREW, Upper mount	1
3	320962	BUSHING	1	40	307708	LOCKWASHER, Mount screw	2
4	320937	SEAL	2	41	316406	SCREW, Upper mount	2
5	392520	LEAD ASSY , Ground	1	42	313169	LOCKWASHER, Mount screw	2
6	320866	THRUST WASHER, Pivot shaft	1	43	392123	ANODE	1
●7	983041	STEERING ARM ASSY	1	44	908931	SCREW, Exhaust housing	6
□7	983042	STEERING ARM ASSY	1	45	321527	SCREW, Lower cover, front	2
8	308738	SCREW, Ground wire to swivel bracket	1	46	600014	SCREW, 2 5 only	2
9	327696	KEEPER, Pivot shaft	2	47	323222	GASKET, Inner exh hsg to plate	1
10	327801	COVER, Mount bracket lower	2	48	327803	PLATE ASSY , 2 5 only	1
11	322000	SCREW, Cover	8	49	911043	SCREW	2
12	326797	MOUNT BRACKET	1	50	315071	SCREW, Hsg to adapter, 2 5 only	1
13	320746	NUT, Mount bracket	1	50	302030	SCREW, Hsg to adapter, 2 6 only	2
14	379116	GROUND WIRE, Swivel bracket	1	51	315204	NUT, Powerhead to adapter	2,4
●15	392170	EXHAUST HOUSING	1	52	319883	SCREW, Megaphone, front,	2
□15	392171	EXHAUST HOUSING	1	53	320936	SEAL, Exhaust housing	2
16	328049	SCREW, Anode, exhaust housing	2	54	327802	TUNING MEGAPHONE, 2 5 only	1
17	306470	WASHER, Exhaust housing	8	54	328012	TUNING MEGAPHONE, 2 6 only	1
18	983142	RUBBER MOUNT, Lower	2	●55	327796	EXHAUST HOUSING, Inner lower	1
19	328078	SCREW, Mount	4	□55	327797	EXHAUST HOUSING, Inner lower	1
20	306314	LOCKWASHER, Mount	4	56	307708	LOCKWASHER, Trim cylinder pin	2
21	320961	SEAL, Gearcase to inner housing	1	57	308738	SCREW, Ground wire	2
22	983524	COVER, Exhaust housing, rear	1	58	319453	WASHER, Trim cylinder pin	2
23	911117	SEAL, Exhaust housing cover	1	59	319590	SCREW, Trim cylinder pin	2
24	911122	SCREW, Front to rear cover	4	60	322481	BUSHING, Trim cylinder	2
25	323800	COVER, Exhaust housing, front	1	61	910732	PIN, Trim cylinder	1
26	327800	EXHAUST HOUSING, Inner upper	1	62	981870	GROUND WIRE, Swivel bracket to transom bracket	1
●27	321016	WATER TUBE	1	63	323292	GASKET, Adapter to megaphone, 2 6 only	1
□27	321015	WATER TUBE	1	64	302479	SCREW, Adapter to powerhead	2
28	305145	GROMMET, Water tube	1	65	314956	STUD, 2 6 only	1
29	324516	GASKET, Hsg to adapter, 2 5 only	1	66	306338	NUT, 2 6 only	1
30	327804	ADAPTER, Exh hsg , 2 5 only	1	67	314616	STUD, Exhaust hsg , 2 6 only	1
30	392891	ADAPTER, Exh hsg , 2 6 only	1	68	309192	WASHER, Manifold to adapter, 2 6 only	3
30A	301185	STUD, 2 6 only	3	69	306422	NUT, Manifold to adapter, 2 6 only	3
31	307555	LOCKWASHER	2	70	307161	LOCKWASHER, Mount	1
32	303459	SCREW, Adapter to housing	3	71	303480	LOCKWASHER, Ground	4
33	306778	SCREW, Megaphone rear	2	72	304051	WASHER, Ground strap	4
34	302290	LOCKWASHER	AR				
35	306418	SCREW, Inner to outer housing	5				
36	306409	SCREW, Adapter to housing, outer	2				

- 20 Inch Transom Models
- 25 Inch Transom Models

GEARCASE



834071

REF NO	PART NO	NAME OF PART	QTY PER ASSY	REF NO	PART NO	NAME OF PART	QTY PER ASSY
•*	392816	GEARCASE ASSY , Complete 2 6 "C & G" models only	1	42	311598	WASHER, Nylon	1
□*	392818	GEARCASE ASSY , Complete 2 6 "C & G" models only	1	43	314742	SHIM, 002	AR
•*	393484	GEARCASE ASSY , Long 2 6 "F" models only, all 2 5	1	43	323362	SHIM, 003	AR
□*	393485	GEARCASE ASSY , X-long 2 6 "F" models only, all 2 5	1	43	323361	SHIM, 004	AR
1	393336	GEARCASE & BEARING ASSY , 2 6 "C & G" models only	1	43	314745	SHIM, 005	AR
1	393483	GEARCASE & BEARING ASSY , 2 6 "F" models only all 2 5	1	44	327439	THRUST WASHER, Forward gear	1
2	387817	BEARING, Pinion	1	45	388618	COVER & SEAL ASSY	1
3	324852	SET SCREW, Bearing	1	46	318372	O-RING, Shift rod	1
*	307853	O-RING	1	47	318544	SCREW, Drain & fill	1
4	321123	SCREEN, Water intake	1	*	311598	WASHER, Nylon	1
5	326266	FITTING, Pitot tube	1	48	318139	SCREW, Cover	6
5A	305749	PLUG, Fitting	1	49	160084	BALL, Detent	1
6	387245	BEARING HOUSING & SEAL	1	50	314728	O-RING, Driveshaft bearing	1
†7	321453	OIL RETAINER, Driveshaft	2	†51	324701	GASKET, Impeller housing plate	1
8	301250	WASHER	4	52	320570	SPACER, Propeller nut	1
9	316534	SCREW, Housing to gearcase	4	†53	321008	GROMMET, Exhaust housing to shift rod	1
10	389455	HOUSING & BEARING ASSY	1	†54	326639	PLATE, Impeller housing ①	1
10A	389039	BEARING	1	†54	327782	PLATE, Impeller housing ②	1
11	323946	DETENT, Shifter	1	55	389657	IMPELLER HOUSING, Gearcase ①	1
12	312870	SPRING, Detent	1	55	392748	IMPELLER HOUSING, Gearcase ②	1
13	322900	CRADLE, Shifter	1	†56	321453	SEAL, Impeller housing	1
14	322938	SHIFTER	1	†57	323626	SCREW, Impeller housing	4
15	322941	SHAFT	1	†58	314008	GROMMET, Water tube	1
16	328825	PIN, Shift lever	1	59	321159	COVER, Impeller housing	1
17	321119	O-RING, Propeller shaft	1	60	327810	TRIM TAB, Gearcase	1
18	982416	PROPELLER SHAFT ASSY	1	†61	320943	GROMMET, Impeller housing	1
19	382408	THRUST BRG ASSY , Reverse gear	1	†62	310585	O-RING, Driveshaft to crankcase	1
20	389042	THRUST BRG , Assy , fwd gear	1	†63	323950	KEY, Driveshaft to impeller	1
21	321171	RETAINING RING	2	†64	306643	SCREW, Cover to impeller	2
22	321174	RETAINER PLATE, Brg hsg	1	65	313715	SCREW, Trim tab	1
23	324670	GASKET, Shift rod cover	1	†66	321176	PLATE, Liner, impeller ①	1
24	392668	BEARING HSG SEAL ASSY	1	67	320569	NUT, Propeller	1
25	382407	NEEDLE BEARING ASSY	1	68	309955	COTTER PIN, Propeller nut	1
26	387247	NEEDLE BEARING ASSY	1	69	306314	LOCKWASHER, Screw, long	1
27	320862	SEAL	2	70	313697	SCREW, Gearcase to housing, long	1
28	316563	SCREW	4	71	307708	LOCKWASHER, Screw, short	5
29	317178	O-RING	1	72	320741	SCREW, Gearcase to housing, short	5
30	314731	THRUST WASHER, Reverse gear	1	†73	321120	SEAL, Impeller housing plate	1
31	314730	NUT, Pinion to driveshaft	1	†74	391538	IMPELLER ASSY	1
32	392166	GEARSET, Forward, reverse & pinion	1	†75	322894	LINER, Impeller ①	1
33	327753	SHIM - FORWARD GEAR (015)	1	†75	327781	LINER, Impeller ②	1
33	327754	SHIM - FORWARD GEAR (017)	1	□76	321122	SPACER, Shift rod (included in 392637)	1
33	327755	SHIM - FORWARD GEAR (019)	1	77	322302	SEAL, Shift rod	1
33	327756	SHIM - FORWARD GEAR (021)	1	78	321173	THRUST BUSHING	1
33	327757	SHIM - FORWARD GEAR (023)	1	79	392160	ANODE KIT	1
33	327758	SHIM - FORWARD GEAR (025)	1	80	391536	PROPELLER, 15-1/2 x 13 SST	1
33	327759	SHIM - FORWARD GEAR (027)	1	80	391535	PROPELLER, 15-1/2 x 15	1
33	327760	SHIM - FORWARD GEAR (029)	1	80	391200	PROPELLER, 15 x 17	1
34	327656	THRUST WASHER, Pinion	1	80	391201	PROPELLER, 14-1/2 x 19	1
•35	391380	DRIVESHAFT ASSY	1	80	391202	PROPELLER, 14-1/4 x 21	1
□35	391379	DRIVESHAFT ASSY	1	80	391203	PROPELLER, 14-1/4 x 23	1
•36	324407	SHIFT ROD	1	80	389925	PROPELLER, 15 x 16 SST	1
□36	324408	SHIFT ROD	1	80	389924	PROPELLER, 14-1/2 x 19 SST	1
37	387656	THRUST BEARING, Pinion	1	80	389923	PROPELLER, 14-1/4 x 21 SST	1
38	910198	SHIFTER, Clutch dog	1	80	389019	PROPELLER, 14-1/4 x 23 SST	1
39	313448	PIN, Clutch dog	1	80	391290	PROPELLER, 15 x 17 SST	1
40	324369	SPRING, Clutch dog pin	1	80	390831	PROPELLER 15-1/2 X 14 SST	1
41	307551	PLUG, Fill & drain	1	81	387157	BUSHING ASSY , Prop	1
				82	321295	CONVERGING RING, Std prop	1
				83	389165	CHROME PUMP KIT ①	1
				83	392749	CHROME PUMP KIT ②	1
				84	390768	WATER PUMP REPAIR KIT ①	1
				84	393082	WATER PUMP REPAIR KIT ②	1
				84	391637	WATER PUMP REPAIR KIT (INCLUDES IMPELLER HOUSING) ①	1
				84	392750	WATER PUMP REPAIR KIT (INCLUDES IMPELLER HOUSING) ②	1

* Not Shown

• 20 inch Transom Models Only

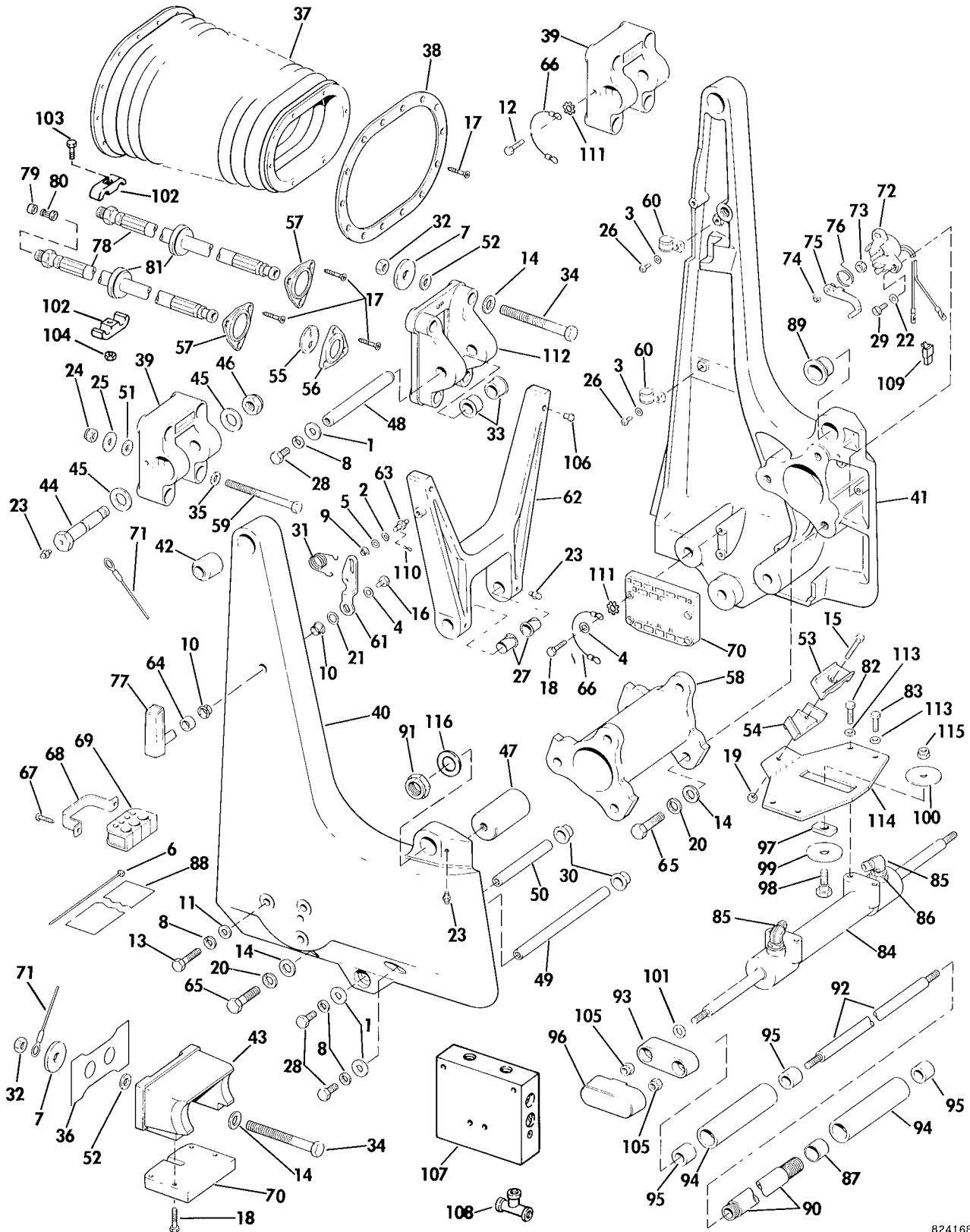
□ 25 inch Transom Models Only

† Contents of Water Pump Repair Kit

① Early Production

② Late Production

TRANSOM BRACKET - HIGH MOUNT



824168

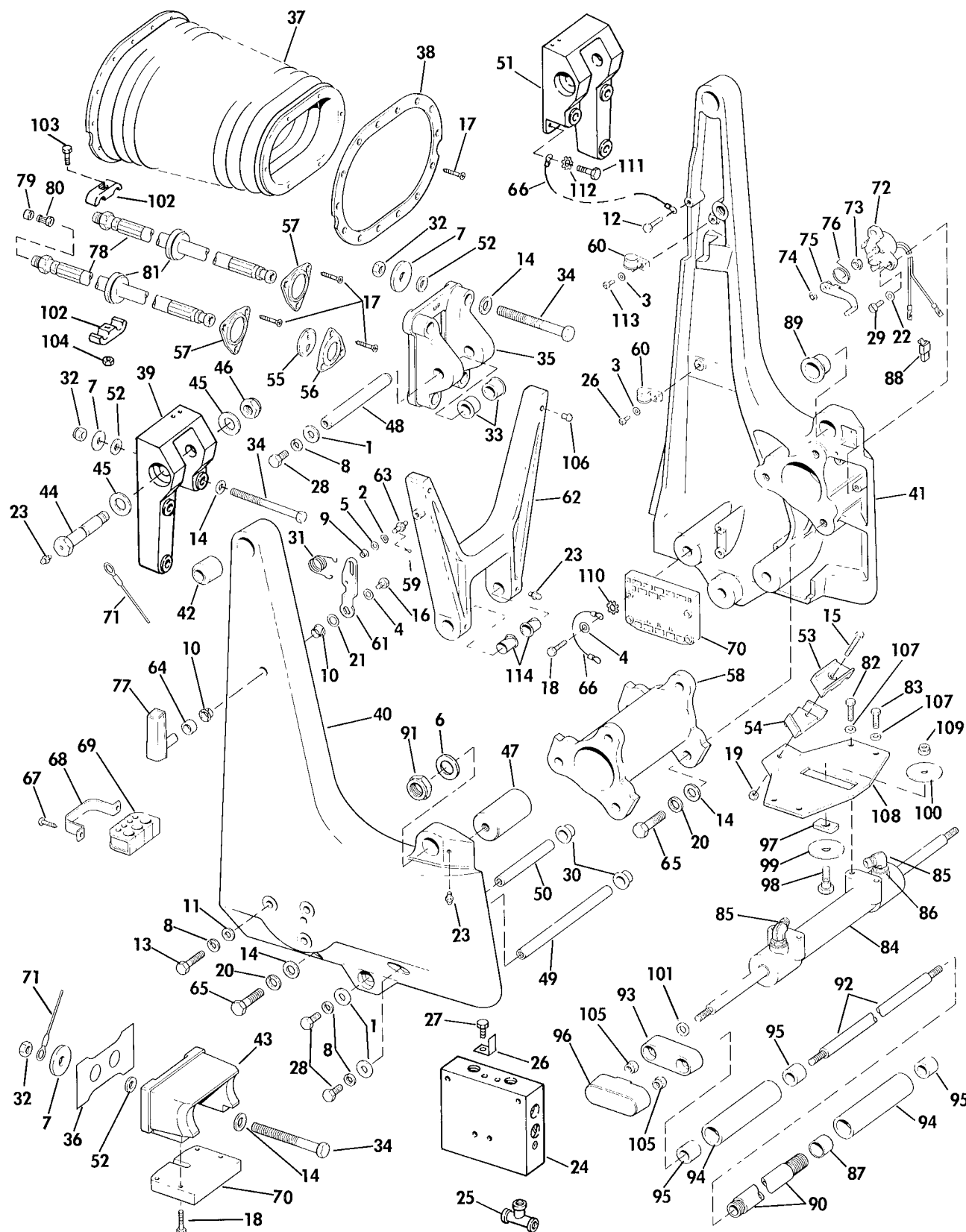
TRANSOM BRACKET - HIGH MOUNT

REF NO	PART NO	NAME OF PART	QTY PER ASSY	REF NO	PART NO	NAME OF PART	QTY PER ASSY
1	121252	WASHER, Pivot pin	6	62	910807	SUPPORT ARM, Tilt lock	1
2	204757	BOW WASHER, Support arm	1	63	910808	PIN, Support arm	1
3	303715	WASHER, Clamp, large	3	64	910809	SPACER, Handle, tilt lock	1
4	304051	WASHER, Lever & ground wire	2	65	910834	SCREW, Lower support & torque tube	8
5	303887	SHIM, Support arm	1				
6	318322	TIE STRAP	4	66	981870	GROUND WIRE	2
7	307238	WASHER, Transom mount	6	67	910878	SCREW, Clamp, grommet to transom	2
8	307708	LOCKWASHER, Tilt pin & manifold	9	68	910829	CLAMP GROMMET TO TRANSOM	1
9	307841	SLEEVE, Support arm	1				
10	308532	BUSHING, Tilt lock handle	2	69	911048	GROMMET, Transom fuel hose & elect cables	1
11	308688	WASHER, Manifold	3				
12	308738	SCREW, Ground wire	3	70	982985	ANODE ASSY	2
13	911215	SCREW, Manifold	3	71	982992	LEAD ASSY, Ground, upper mount to lower support	1
14	310071	WASHER, Torque tube & lower support (transom mount)	14	72	983010	SENDING UNIT ASSY	1
15	325115	SCREW, Hose brackets to plate	1	73	320689	NUT	1
16	312241	SCREW, Lever to shaft	1	74	511527	RETAINER	1
17	312270	SCREW, Transom	23	75	511530	ARM	1
18	324960	SCREW, Anode	7	76	910790	SPRING, Sending unit	1
19	313022	LOCKNUT, Hose brackets to plate	1	77	983033	HANDLE, Tilt lock	1
20	313169	LOCKWASHER, Torque tube & support	8	78	983297	HYDRAULIC LINE ASSY, Steering	2
21	313219	WASHER, Tilt lock handle	1	79	911039	RETAINER, Filter	1
22	313396	WASHER, Sending unit	2	80	983172	FILTER, Steering hose	1
23	313607	LUBE FITTING	6	81	311544	GROMMET, Oil line	1
24	313990	NUT, Transom mount	8	82	910736	SCREW, Long	2
25	314099	WASHER, Upper mount	8	83	910741	SCREW, Short	2
26	316233	SCREW, Clamp, large	3	84	982974	CYLINDER ASSY, Steering	1
27	318193	BUSHING, Support arm	2	85	983049	FITTING	2
28	319590	SCREW, Tilt & trim pin	6	86	911012	O-RING, Fitting	1
29	308825	SCREW, Sending unit	2	86	911013	O-RING, Fitting	1
30	910855	BUSHING, Tilt cylinder	4	87	910796	BUSHING, Rod to sleeve	1
31	910837	SPRING, Lever	1	88	910810	WRAP, Battery cables	1
32	321861	NUT, Transom mount	6	89	321035	BUSHING, Trim & steering tube to bracket	2
33	322481	BUSHING, Tilt cylinder, upper	2				
34	326614	SCREW, Transom mount	6	90	321052	TUBE, Trim & steering	1
35	552993	WASHER, Upper mount	8	91	316828	LOCKNUT, Trim & steering tube to bracket	2
36	910663	ISOLATER PAD, Lower	1				
37	910669	BELLOWS, Transom	1	92	910708	CONNECTOR ROD, Steering	1
38	910672	BEZEL, Bellows to transom	1	93	910709	BRACE, Connector & cylinder rods	2
39	910685	UPPER MOUNT BRACKET	2	94	910710	SLEEVE, Connector rod	2
40	983183	TRANSOM BRACKET, 4 degree port	1	95	910711	BUSHING, Connector rod to sleeve	3
40	983185	TRANSOM BRACKET, 8 degree port	1	96	910712	COVER, Brace	2
40	983187	TRANSOM BRACKET, 12 degree port	1	97	910714	GUIDE, Steering plate	1
41	983184	TRANSOM BRACKET, 4 degree starboard	1	98	910716	BOLT, Steering plate to steering arm	1
41	983186	TRANSOM BRACKET, 8 degree starboard	1	99	910717	WASHER, Bolt to steering plate	1
41	983188	TRANSOM BRACKET, 12 degree starboard	1	100	910735	WASHER, Bolt to steering arm	1
42	983045	BUSHING, Upper pivot	2	101	910772	SHIM, Washer, brace to cylinder rod (08)	AR
43	910689	BRACKET, Lower support 4 degree	1	101	911124	SHIM, Washer, brace to cylinder rod (04)	AR
43	910784	BRACKET, Lower support 8 degree	1	102	910862	CLAMP	2
43	910786	BRACKET, Lower support 12 degree	1	103	303398	SCREW	1
44	910690	BOLT	2	104	313022	NUT	1
45	910691	WASHER, Upper pivot	4	105	307160	LOCKNUT, Connector & cylinder rods to brace	4
46	910692	LOCKNUT, Upper pivot	2	106	307947	BUMPER, Support arm	2
47	910693	SUPPORT, Lower	1	107	983077	SYNCHRONIZATION VALVE, Dual engines only	1
48	910695	PIVOT PIN, Tilt cylinder	1	108	910877	TEE, Valve assy	1
49	910696	PIVOT PIN, Tilt cylinder	1	109	511847	CONNECTOR, Sending unit	1
50	910697	PIVOT PIN, Trim cylinder	1	110	306394	COTTER PIN, Trail lock	1
51	910698	SEALING WASHER, Small	8	111	303480	LOCKWASHER, Ground	4
52	910699	SEALING WASHER, Large	6	112	910688	BRACKET, Cylinder mount 4 degree	1
53	910715	BRACKET, Steering hose	1				
54	910718	BRACKET, Steering hose	1	112	910783	BRACKET, Cylinder mount 8 degree	1
55	910738	GROMMET, Motor cable	1				
56	910739	BEZEL, Transom	1	112	910785	BRACKET, Cylinder mount 12 degree	1
57	910740	BEZEL, Steering lines	2				
58	910748	TORQUE TUBE	1	113	303886	WASHER	4
59	910781	SCREW, Transom mount	8	114	910713	STEERING PLATE	1
60	910799	CLAMP, Trim & motor lead	3	115	315077	LOCKNUT, Steering arm to plate	1
61	910806	LEVER, Tilt lock	1	116	910722	WASHER, Steering tube	2

• Steering Cylinder With Letter "O" Stamped Near Part Number

□ Steering Cylinder Without "O" Stamp

TRANSOM BRACKET - LOW MOUNT



834005

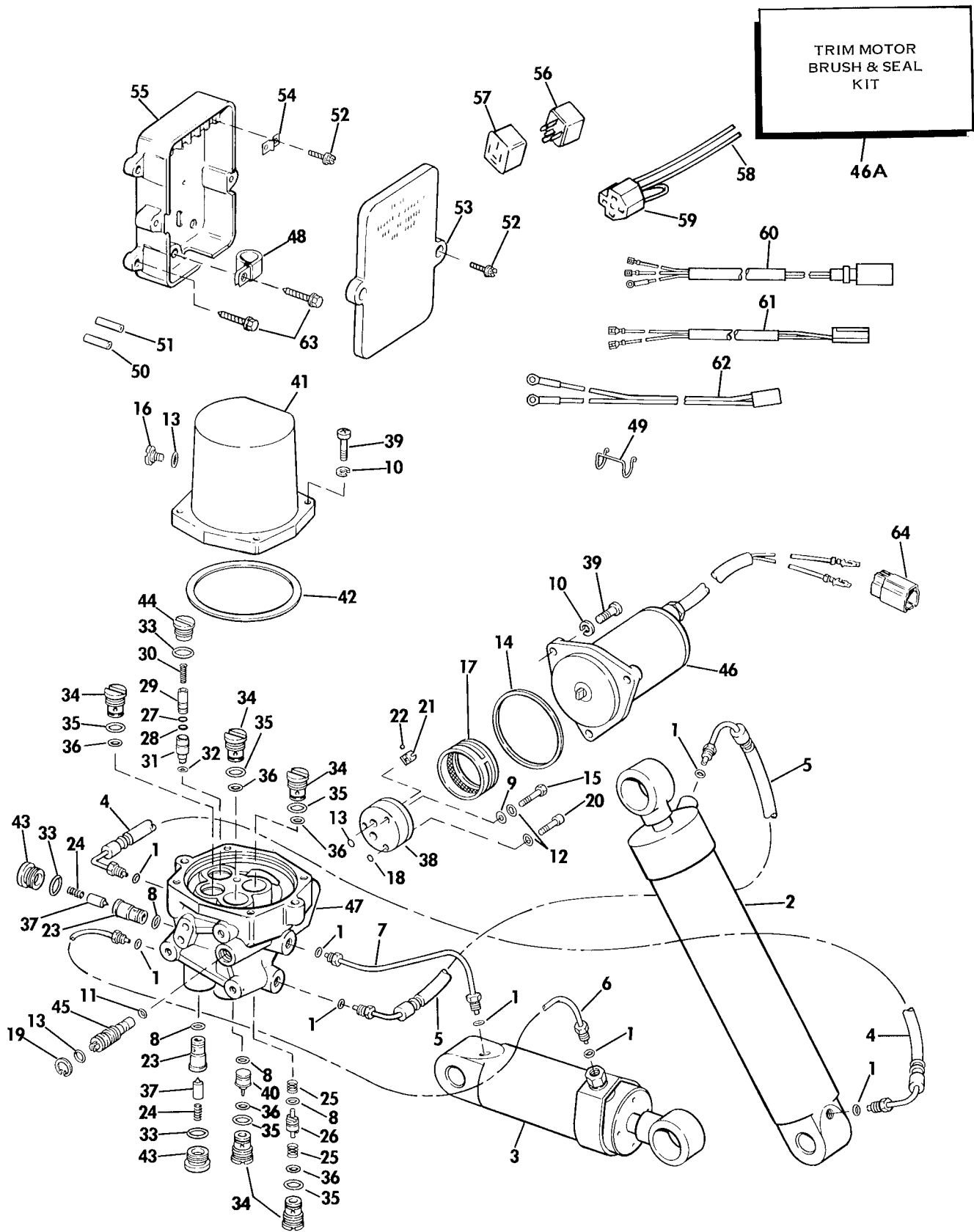
TRANSM BRACKET - LOW MOUNT

REF NO	PART NO	NAME OF PART	QTY PER ASSY	REF NO	PART NO	NAME OF PART	QTY PER ASSY
1	121252	WASHER, Pivot pin	6	54	910718	BRACKET, Steering hose	1
2	204757	BOW WASHER, Support arm	1	55	910738	GROMMET, Motor cable	1
3	303715	WASHER, Clamp, large	3	56	910739	BEZEL, Transom	1
4	304051	WASHER, Lever & ground wire	2	57	910740	BEZEL, Steering lines	2
5	303887	SHIM, Support arm	1	58	910748	TORQUE TUBE	1
6	910722	WASHER, Tube	2	59	306394	COTTER PIN, Trail lock	1
7	307238	WASHER, Transom mount	12	60	910799	CLAMP, Trim & motor lead	3
8	307708	LOCKWASHER, Tilt pin & manifold	9	61	910806	LEVER, Tilt lock	1
9	307841	SLEEVE, Support arm	1	62	910807	SUPPORT ARM, Tilt lock	1
10	308532	BUSHING, Tilt lock handle	2	63	910808	PIN, Support arm	1
11	308688	WASHER, Manifold	3	64	910809	SPACER, Handle, tilt lock	1
12	308738	SCREW, Ground wire	3	65	910834	SCREW, Lower support & torque tube	8
13	911215	SCREW, Manifold	3	66	981870	GROUND WIRE	2
14	310071	WASHER, Torque tube & lower support (transom mount)	20	67	910878	SCREW, Clamp, grommet to transom	2
15	325115	SCREW, Hose brackets to plate	1	68	910829	CLAMP, Grommet to transom	1
16	312241	SCREW, Lever to shaft	1	69	911048	GROMMET, Transom fuel hose & elect cables	1
17	312270	SCREW, Transom	23	70	983191	ANODE ASSY	2
18	324960	SCREW, Anode	7	71	983192	LEAD ASSY, Ground, upper mount to lower support	1
19	313022	LOCKNUT, Hose brackets to plate	1	72	983010	SENDING UNIT ASSY	1
20	313169	LOCKWASHER, Torque tube & support	8	73	320689	NUT	1
21	313219	WASHER, Tilt lock handle	1	74	511527	RETAINER	1
22	313396	WASHER, Sending unit	2	75	511530	ARM	1
23	313607	LUBE FITTING	6	76	910790	SPRING, Sending unit	1
24	983430	SYNCHRONIZATION VALVE, Dual engines only	1	77	983033	HANDLE, Tilt lock	1
25	910877	TEE, Valve assy	1	78	983420	HYDRAULIC LINE ASSY, Steering	1
26	911313	STOP, Toe-in adjustment	2	79	911039	RETAINER, Filter	1
27	911321	SCREW	1	80	983172	FILTER, Steering hose	1
28	319590	SCREW, Tilt & trim pin	6	81	311544	GROMMET, Oil line	1
29	308825	SCREW, Sending unit	2	82	910736	SCREW, Long	2
30	910855	BUSHING, Tilt cylinder	4	83	910741	SCREW, Short	2
31	910837	SPRING, Lever	1	84	982974	CYLINDER ASSY, Steering	1
32	321861	NUT, Transom mount	14	85	983049	FITTING	2
33	322481	BUSHING, Tilt cylinder, upper	2	86	911012	O-RING, Fitting	1
34	321577	SCREW, Transom mount	12	87	911013	O-RING, Fitting	1
35	910688	BRACKET, Cylinder mount 4 degree	1	88	910796	BUSHING, Rod to sleeve	1
35	910783	BRACKET, Cylinder mount 8 degree	1	89	511847	CONNECTOR, Sending unit	1
35	910785	BRACKET, Cylinder mount 12 degree	1	90	321035	BUSHING, Trim & steering tube to bracket	2
36	910663	ISOLATER PAD, Lower	1	91	321052	TUBE, Trim & steering	1
37	911046	BELLOWS, Transom	1	92	316828	LOCKNUT, Trim & steering tube to bracket	2
38	911044	BEZEL, Bellows to transom	1	93	910708	CONNECTOR ROD, Steering	1
39	911035	UPPER MOUNT BRACKET, Port	1	94	910709	BRACE, Connector & cylinder rods	2
40	983183	TRANSOM BRACKET, 4 degree port	1	95	910710	SLEEVE, Connector rod	2
40	983185	TRANSOM BRACKET, 8 degree port	1	96	910711	BUSHING, Connector rod to sleeve	3
40	983187	TRANSOM BRACKET, 12 degree port	1	97	910712	COVER, Brace	2
41	983184	TRANSOM BRACKET, 4 degree starboard	1	98	910714	GUIDE, Steering plate	1
41	983186	TRANSOM BRACKET, 8 degree starboard	1	99	910716	BOLT, Steering plate to steering arm	1
41	983188	TRANSOM BRACKET, 12 degree starboard	1	100	910717	WASHER, Bolt to steering plate	1
42	983045	BUSHING, Upper pivot	2	101	910735	WASHER, Bolt to steering arm	1
43	910689	BRACKET, Lower support 4 degree	1	101	910772	SHIM, Washer, brace to cylinder rod (08)	AR
43	910784	BRACKET, Lower support 8 degree	1	101	911124	SHIM, Washer, brace to cylinder rod (04)	AR
43	910786	BRACKET, Lower support 12 degree	1	102	910862	CLAMP	2
44	910690	BOLT	2	103	303398	SCREW	1
45	910691	WASHER, Upper pivot	4	104	313022	NUT	1
46	910692	LOCKNUT, Upper pivot	2	105	307160	LOCKNUT, Connector & cylinder rods to brace	4
47	910693	SUPPORT, Lower	1	106	307947	BUMPER, Support arm	2
48	910695	PIVOT PIN, Tilt cylinder	1	107	303886	WASHER	4
49	910696	PIVOT PIN, Tilt cylinder	1	108	910713	STEERING PLATE	1
50	910697	PIVOT PIN, Trim cylinder	1	109	315077	LOCKNUT, Steering arm to plate	1
51	911036	UPPER MOUNT BRACKET, Star	1	110	303480	LOCKWASHER, Ground	4
52	910699	SEALING WASHER, Large	12	111	911202	SCREW, Ground & clamp	2
53	910715	BRACKET, Steering hose	1	112	303701	LOCKWASHER, Ground	1
				113	316233	SCREW, Clamp, large	3
				114	318193	BUSHING, Support arm	2

• Steering Cylinder With letter "O" Stamped Near Part Number

□ Steering Cylinder Without "O" Stamp

SELECTRIM/TILT



SD0148

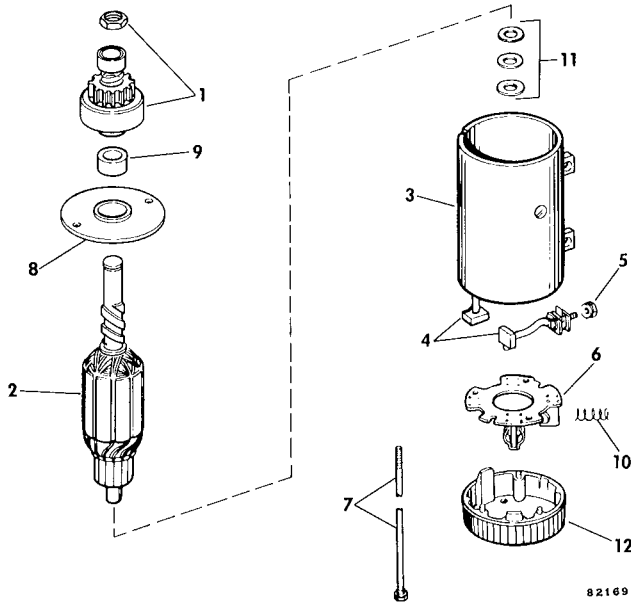
REF NO	PART NO	NAME OF PART	QTY PER ASSY	REF NO	PART NO	NAME OF PART	QTY PER ASSY
1	321117	O-RING, Oil line	8	34	387376	VALVE SEAT, Housing & seal	
2	982966	CYLINDER ASSY, Tilt	1			assy	5
3	982967	CYLINDER ASSY, Trim	1	35	326649	O-RING	1
4	982968	OIL LINE ASSY	1	36	304174	O-RING	1
5	983029	OIL LINE ASSY	1	37	389000	VALVE CORE & SEAL ASSY	2
6	982970	OIL LINE ASSY	1	38	389836	OIL PUMP ASSY	1
7	982971	OIL LINE ASSY	1	39	901632	SCREW	7
*	982998	MOTOR, Reservoir & manifold assy	1	40	910681	PISTON, Pump control	1
8	202893	O-RING, Valve seat & piston	4	41	910701	COVER, Reservoir	1
9	300154	WASHER, Pump to manifold	1	42	910702	O-RING, Cover	1
10	302290	LOCKWASHER, Screw, motor		43	910866	HOUSING, Relief valve	2
		reservoir	7	44	910865	HOUSING, Valve seat, manifold	1
11	910998	O-RING, Manual release, small	1	45	983009	VALVE ASSY, Manual release	1
12	306311	LOCKWASHER, Screw, pump	3	46	983019	MOTOR ASSY	1
13	307450	O-RING, Fill plug, pump & manual		•46A	390987	BRUSH & SEAL KIT	1
		release	2	□46A	392202	BRUSH & SEAL KIT	1
14	321163	O-RING, Motor to manifold	1	47	982964	MANIFOLD ASSY	1
15	321219	SCREW, Pump to manifold	1	*	983006	JUNCTION BOX ASSY	1
16	321284	FILL PLUG, Reservoir	1	48	317000	CLAMP	2
17	321350	FILTER, Oil pump	1	49	322548	RETAINER	1
18	321357	O-RING, Pump, small	1	50	910775	SLEEVE	1
19	321362	RETAINING RING, Manual		51	910776	SLEEVE	1
		release	1	*	983005	JUNCTION BOX & COVER	1
20	321942	SCREW, Oil pump to manifold	2	52	327785	SCREW, Cover & terminal	8
21	322174	COUPLING, Oil pump to motor	1	53	983003	COVER ASSY	1
22	322175	BALL, Coupling	1	54	315004	TERMINAL BLOCK JUMPER	3
23	323406	VALVE SEAT, Relief valve	2	55	511870	BASE, Junction box	1
24	323407	SPRING, Relief valve	2	56	582195	RELAY & SEAL KIT	2
25	323846	SPRING, Pump control piston	3	57	511869	SEAL	1
26	911034	PISTON, Pump control	1	58	582186	CONNECTOR & LEAD	2
27	324677	O-RING, Valve core, upper	1	59	511866	CONNECTOR	1
28	324678	O-RING, Valve core, lower	1	60	983018	CABLE ASSY	1
29	325862	VALVE CORE, Relief valve	1	61	983028	CABLE ASSY	1
30	325863	SPRING, Pressure relief	1	62	983027	CABLE ASSY, Sending unit	1
31	391155	SEAT, Valve core, relief valve	1	63	310981	SCREW, Mounting	5
32	326425	O-RING, Valve seat	1	64	325698	CONNECTOR	1
33	326649	O-RING, Housing	2				

* Not Shown

• Use Only On Motors With Part No PMP-4001
Stamped on Bottom

□ Use Only On Motors With Part No 20478, 43728
22483 or 43728 Stamped on Bottom

ELECTRIC STARTER PRESTOLITE MODELS MJL-4005



SD0140

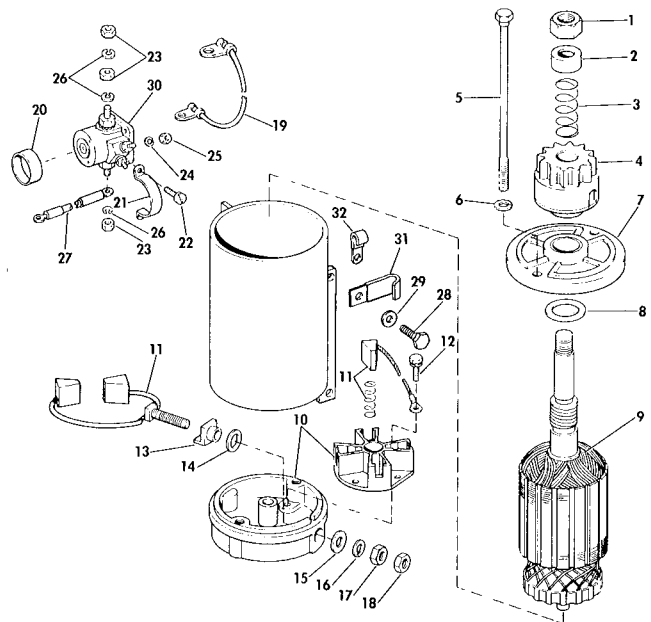
REF NO	PART NO	NAME OF PART	QTY PER ASSY
*	387094	STARTER MTR ASSY	1
1	390104	DRIVE ASSY	1
2	390110	ARMATURE	1
3	390108	FRAME & FIELD ASSY	1
4	383141	BRUSH SET	1
5	311129	LOCKNUT	1
6	384502	BRUSH PLATE ASSY	1
7	390103	THRU BOLT & NUT ASSY	1
8	385059	HEAD ASSY, Drive end	1
9	314693	BEARING	1
10	383142	SPRING SET	1
11	384306	THRUST WASHER PKG	1
12	390106	HEAD ASSY, Commutator	1
*	387735	DAMPER PAD REPAIR KIT	1

* Not Shown
See Below for Mounting Hardware and Solenoid Parts

ELECTRIC STARTER & SOLENOID AMERICAN BOSCH 08142-23-M030SM

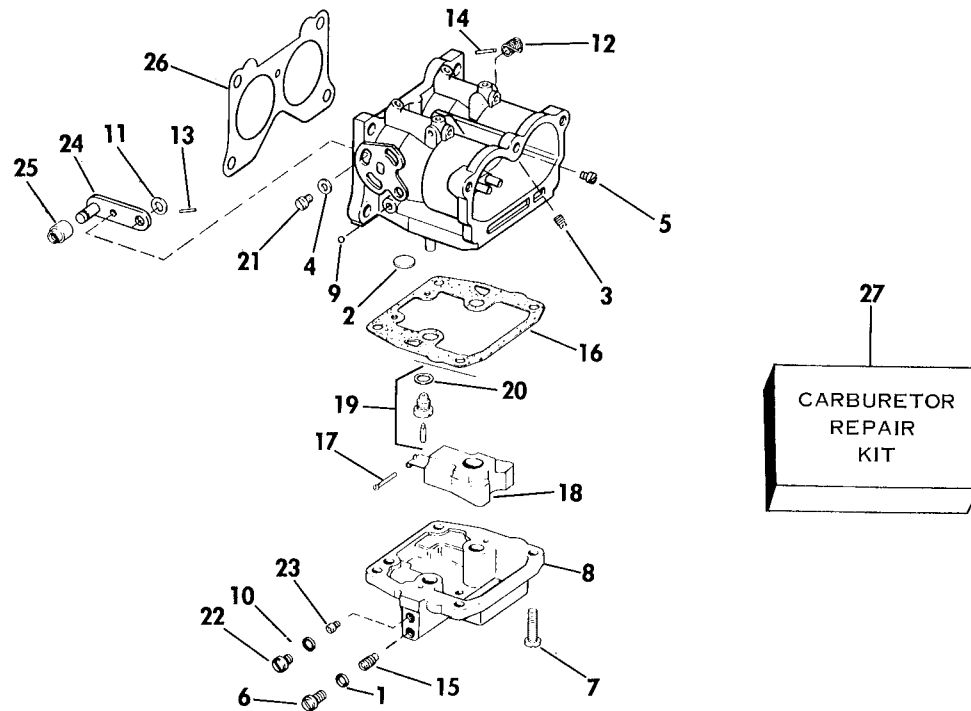
SD0139

REF NO	PART NO	NAME OF PART	QTY PER ASSY
*	387094	STARTER MOTOR ASSY	1
1	316740	NUT, Gear spacer stop	1
2	321571	SPACER, Stop gear	1
3	321570	SPRING, Anti drift	1
4	387683	DRIVE ASSY	1
5	387938	THRU BOLT PKG	1
6	321568	LOCKWASHER	2
7	386639	CAP ASSY	1
8	316750	WASHER, Thrust armature	1
9	387682	ARMATURE	1
10	386645	CAP ASSY, Commutator	1
11	385952	BRUSH AND SPRING SET	1
12	387680	BOLT AND LOCKWASHER	2
13	316743	BUSHING, Insulation	1
14	316748	WASHER, Insulation	1
15	316749	WASHER, Plain	1
16	316744	LOCKWASHER	1
17	387678	NUT AND WASHER	1
18	321642	LOCKNUT, Input stud	1
19	580733	LEAD ASSY, Ground, solenoid to bracket	1
20	311217	SLEEVE, Solenoid	1
21	311218	CLAMP, Solenoid mounting	1
22	304992	SCREW, Solenoid mounting	2
23	311349	NUT, Terminal	3
24	120052	LOCKWASHER, Terminal	2
25	306556	NUT, Terminal	2
26	306325	LOCKWASHER, Terminal	3
27	581986	LEAD, Starter to solenoid	1
28	302479	SCREW, Str mounting	3
29	306325	LOCKWASHER	3
30	383622	SOLENOID ASSY	1
31	310440	CLAMP, Lead to motor	1
32	310928	CLAMP, Stator & timer leads	1



* Not Shown

CARBURETOR



322221

SD0141

REF NO	PART NO	NAME OF PART	QTY PER ASSY	REF NO	PART NO	NAME OF PART	QTY PER ASSY
*	392532	CARB ASSY , Upper, 2 6 only	1	12	314887	SPRING, Throttle return	1
*	392533	CARB ASSY , Middle, 2 6 only	1	#13	314575	PIN, Return spring	1
*	392532	CARB ASSY , Lower, 2 6 only	1	14	303261	PIN, Shaft	2-1
*	392812	CARB ASSY , Upper, 2 5 only	1	15	322221	ORIFICE PLUG No 49C, 2 5 only	2
*	392813	CARB ASSY , Middle, 2 5 only	1	15	317330	ORIFICE PLUG No 59C, 2 6 only	2
*	392812	CARB ASSY , Lower, 2 5 only	1	16	323784	GASKET, Float bowl	1
††1	321117	WASHER, Screw plug	2	17	302661	PIN, Float	1
††2	202310	CORE PLUG	2	18	383437	FLOAT ASSY	1
3	320015	ORIFICE, Idle air bleed, No 33, 2 6 only	2	19	387658	FLOAT VALVE ASSY	1
3	320016	ORIFICE, Idle air bleed, No 32, 2 5 only	1	20	301996	WASHER	1
•4	306547	WASHER, Follower screw	1	21	302812	SCREW, Cam follower	1
5	324005	ORIFICE, Fuel pullover No 20, 2 6 only	1	22	317501	SCREW PLUG, Orifice	2
6	323783	SCREW, Plug	2	23	322776	ORIFICE, No 29, 2 6 only	2
7	307175	SCREW, Bowl to body	4	23	317474	ORIFICE, No 27, 2 5 only	2
8	391755	FLOAT CHAMBER ASSY	1	•24	382370	LEVER & PIN	1
9	304201	LEAD SHOT	10	•25	308199	ROLLER, Cam follower	1
††10	321117	WASHER, Screw plug	4	††26	327707	GASKET, Carburetor mounting	3
11	307596	WASHER, Throttle shaft	1	27	392550	CARBURETOR REPAIR KIT	1

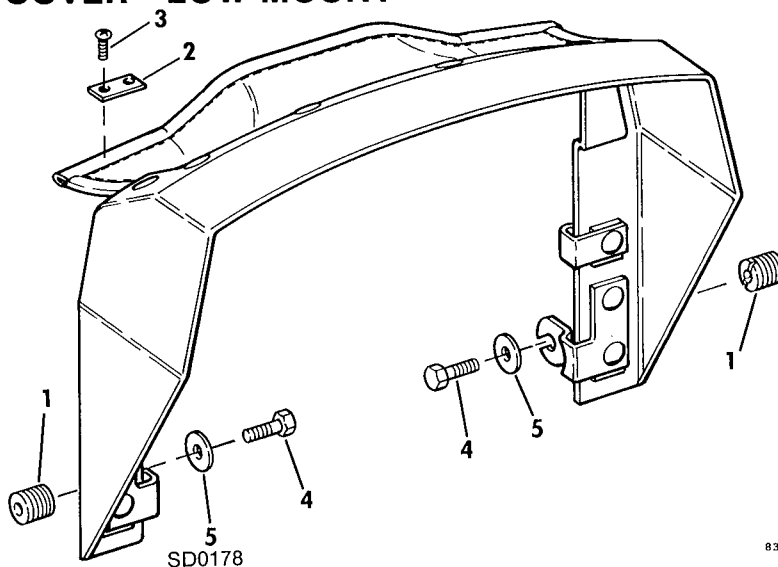
* Not Shown

†† Also available in Carburetor Repair Kit

Upper, Lower Carburetor Only

• Middle Carburetor Only

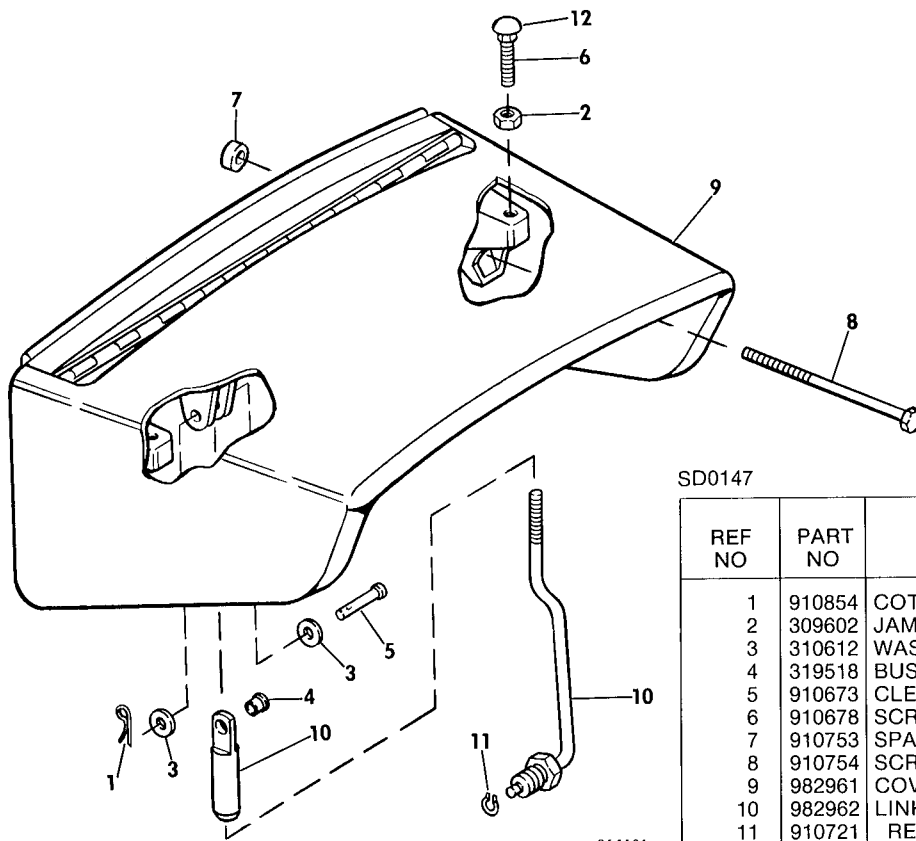
TRANSOM COVER - LOW MOUNT



REF NO	PART NO	NAME OF PART	QTY PER ASSY
*	983229	TRANSOM COVER KIT	1
1	911075	INSERT, Intermediate	2
2	911068	HOLD DOWN, Rod	2
3	911077	SCREW, Hold down	4
4	322000	SCREW, Cover & bracket	2
5	309543	WASHER, Screw, cover & bracket	2

* Not Shown

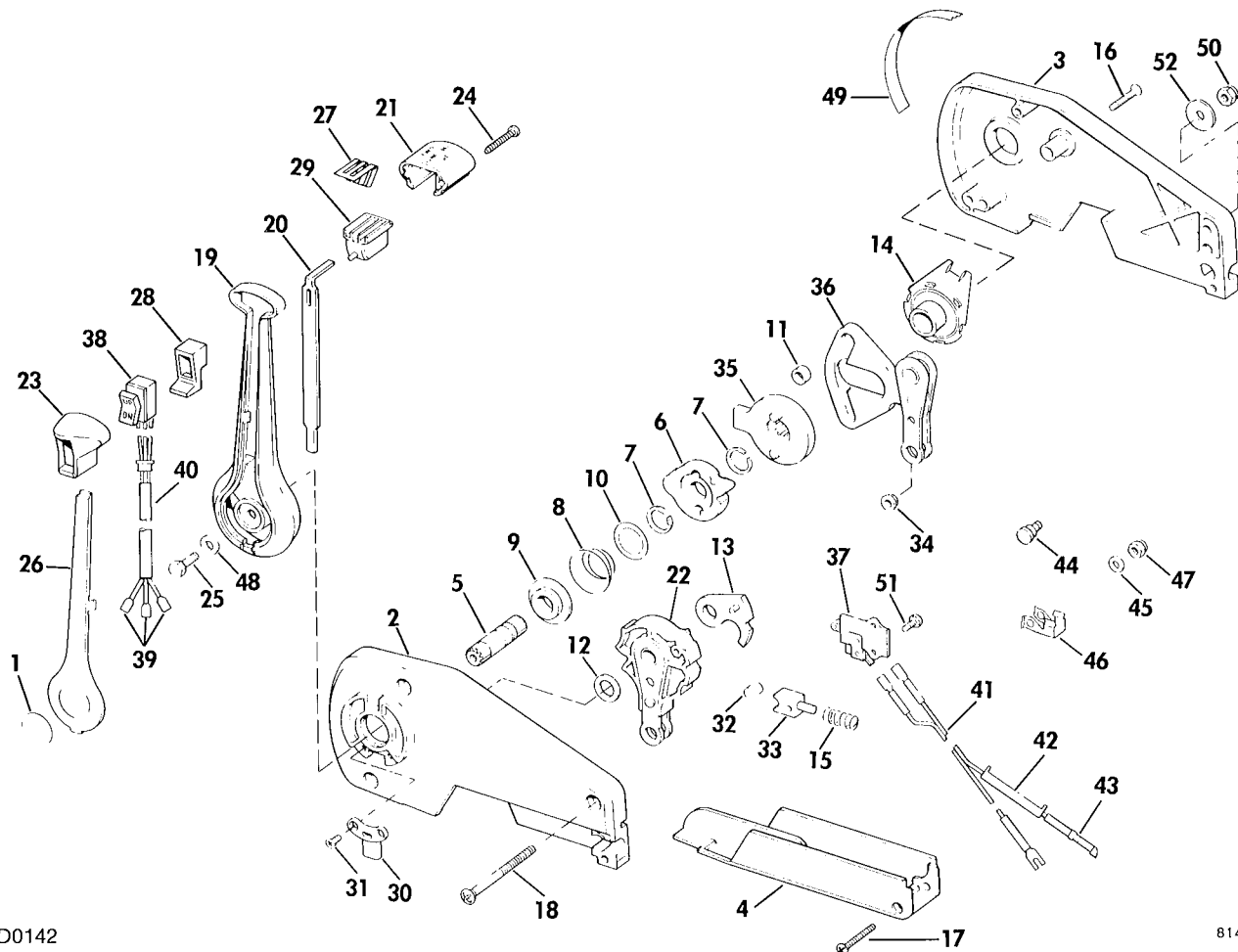
TRANSOM COVER - HIGH MOUNT



SD0147

REF NO	PART NO	NAME OF PART	QTY PER ASSY
1	910854	COTTER PIN	2
2	309602	JAM NUT, Screw, cover support	2
3	310612	WASHER, Clevis pin	4
4	319518	BUSHING, Rod end to clevis pin	2
5	910673	CLEVIS PIN	2
6	910678	SCREW, Cover support	2
7	910753	SPACER, Cover to transom bracket	2
8	910754	SCREW, Cover to transom bracket	2
9	982961	COVER ASSY	1
10	982962	LINK ASSY	2
11	910721	RETAINER RING	1
12	910861	RUBBER COVER	2

REMOTE CONTROL ASSEMBLY - SINGLE LEVER



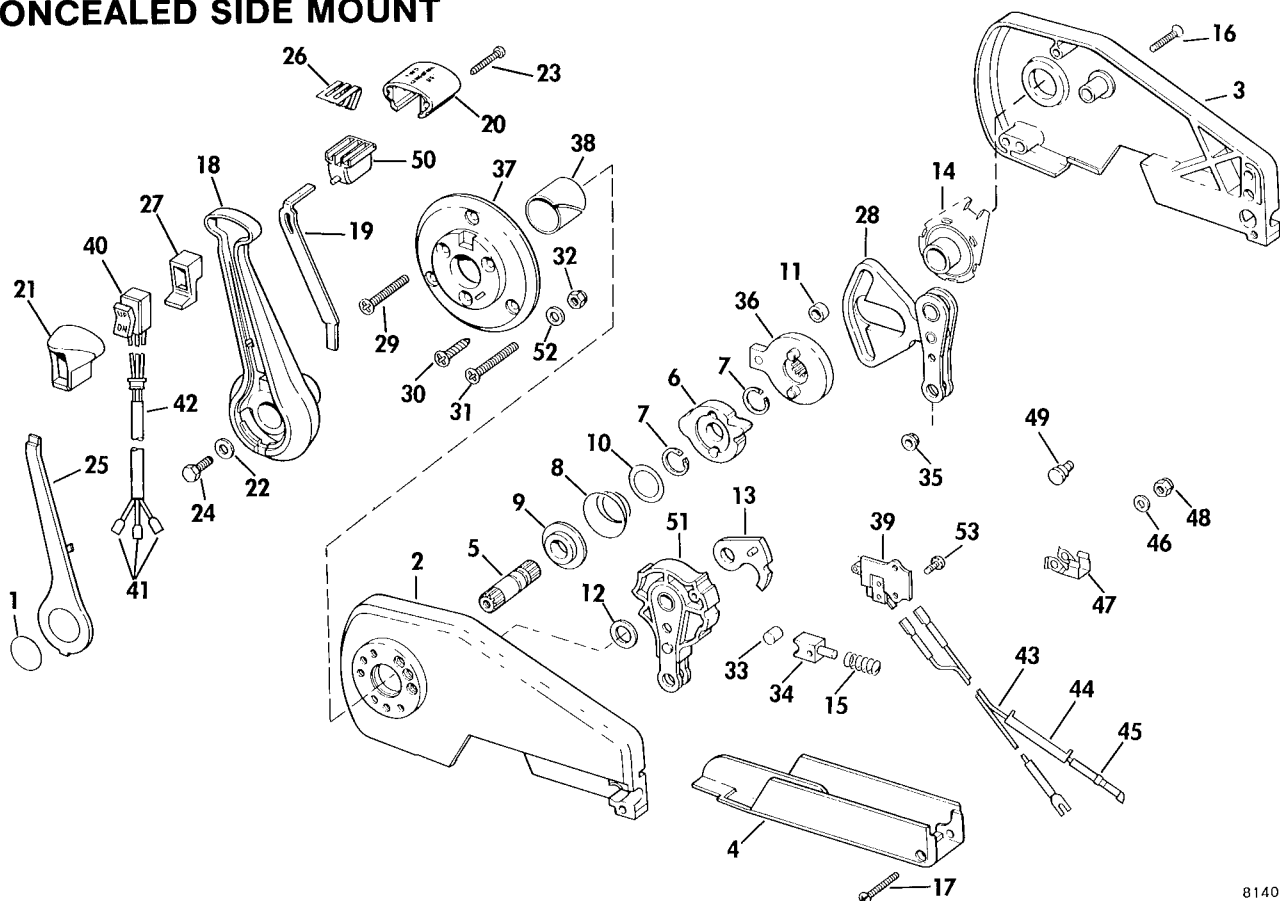
SD0142

814080

REF NO	PART NO	NAME OF PART	QTY PER ASSY	REF NO	PART NO	NAME OF PART	QTY PER ASSY
*	173642	REMOTE CONTROL ASSY -SIDE MOUNT, Single lever with trim	1	30	123324	RETAINER, Trim leads	1
1	123315	APPLIQUE	1	31	123340	SCREW, Retainer to housing	2
2	123245	HOUSING, Starboard	1	32	123341	ROLLER, Detent	1
3	123250	HOUSING, Starboard	1	33	123342	SHOE, Detent roller	1
4	173598	TRAY, Control housing	1	34	123350	BUSHING	2
5	123261	SHAFT, Remote control	1	35	173571	THROTTLE HUB ASSY	1
6	123496	DRIVE GEAR, Shift	1	36	173478	THROTTLE CAM & ARM ASSY	1
7	123264	RETAINING RING	2	37	173480	NEUTRAL START SWITCH ASSY	1
8	123265	SPRING, Drive gear return	1	38	173648	TRIM SWITCH & LEAD	1
9	123266	BUSHING, Shaft to housing	1	39	313005	TERMINAL	3
10	123267	WASHER, Return spring	1	40	510628	SLEEVE	1
11	123268	ROLLER, Throttle cam	1	41	173572	LEAD ASSY , Neutral start switch	1
12	123269	WASHER, Shift arm	1	42	303806	TUBING	1
13	123270	CAM, Neutral switch	1	43	308808	TERMINAL	1
14	173587	FRICTION CONTROL	1	*	173581	CABLE MOUNT HARDWARE KIT	1
15	909859	SPRING, Detent	1	44	323776	CLEVIS PIN	2
16	123273	SCREW, Control housing	3	45	306561	WASHER	2
17	123274	SCREW, Tray to housing	1	46	123140	RETAINER CLIP	1
18	123275	SCREW, Control mounting	3	47	554427	NUT	2
19	123278	HANDLE	1	48	901893	WASHER, Handle to shaft	1
20	123280	PLATE, Neutral lock	1	49	123387	TRIM	1
21	123531	KNOB, Lockout button	1	50	900402	LOCKNUT, Mounting screw	3
22	173542	SHIFT GEAR & ARMS ASSY	1	51	308545	SCREW, Switch to housing	1
23	123535	KNOB, Trim switch	1	52	302407	WASHER, Mounting screw	3
24	123533	SCREW, Knob to handle	2	*	308808	TERMINAL	1
25	123290	SCREW, Handle to shaft	1	*	173600	LONG LIFE CABLE ADAPTER KIT	1
26	123610	COVER, Handle, with trim	1				
27	123443	SPRING, Neutral lock	1				
28	123536	GROMMET, Trim switch	1				
29	173499	LOCKOUT BUTTON ASSY	1				

* Not Shown

REMOTE CONTROL ASSEMBLY CONCEALED SIDE MOUNT



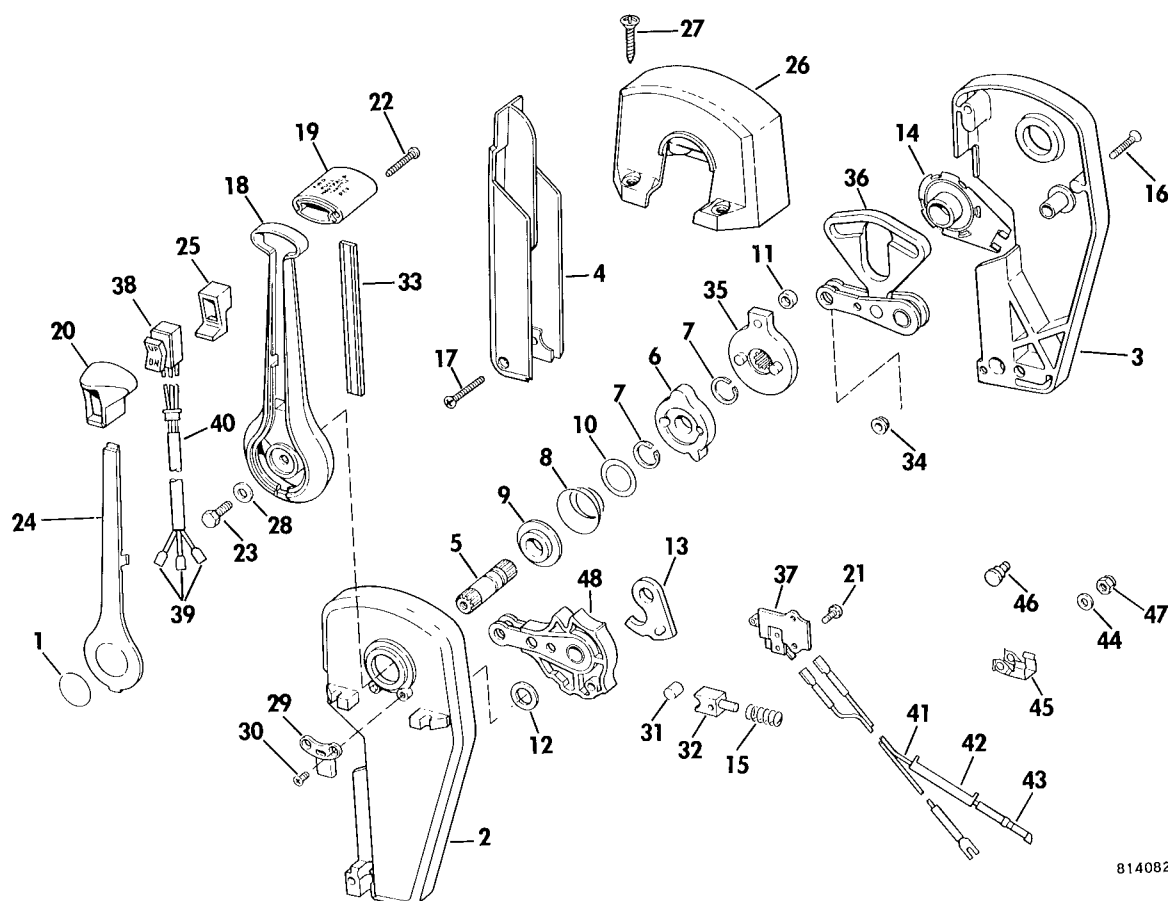
SD0143

814081

REF NO	PART NO	NAME OF PART	QTY PER ASSY	REF NO	PART NO	NAME OF PART	QTY PER ASSY
*	173644	REMOTE CONTROL ASSY , Concealed side mount with trim sw	1	30	123316	SCREW, Flange to boat	3
1	123315	APPLIQUE	1	31	123317	SCREW, Flange to boat	3
2	123244	HOUSING, Control	1	32	900402	LOCKNUT, Mounting screw	3
3	123245	HOUSING, Control	1	33	123341	ROLLER, Detent	1
4	173598	TRAY, Control housing	1	34	123342	SHOE, Detent roller	1
5	123261	SHAFT, Remote control	1	35	123350	BUSHING	2
6	123496	DRIVE GEAR, Shift	1	36	173571	THROTTLE HUB ASSY	1
7	123264	RETAINING RING, Drive gear	2	37	173477	MOUNTING FLANGE & PIN	1
8	123265	SPRING, Drive gear return	1	38	123495	BUSHING, Handle	1
9	123266	BUSHING, Shaft to housing	1	39	173480	NEUTRAL START SWITCH ASSY	1
10	123267	WASHER	1	40	173648	TRIM SWITCH AND LEAD ASSY	1
11	123268	ROLLER, Throttle cam	1	41	313005	TERMINAL	3
12	123269	WASHER, Shift arm	1	42	510628	SLEEVE	1
13	123270	CAM, Neutral switch	1	43	173572	LEAD ASSY , Neutral start switch	1
14	173587	FRICTION CONTROL	1	44	303806	TUBING	1
15	909859	SPRING, Detent	1	45	308808	TERMINAL	1
16	123273	SCREW, Control housing	3	*	173581	CABLE MOUNTING HARDWARE KIT	1
17	123274	SCREW, Tray to housing	1	46	306561	WASHER	2
18	123279	HANDLE, Side mount	1	47	123140	RETAINER CLIP	1
19	123281	PLATE, Neutral lock	1	48	554427	NUT	2
20	123531	KNOB, Lockout button	1	49	323776	CLEVIS PIN	2
21	123535	KNOB, Trim switch	1	50	173499	LOCKOUT BUTTON ASSY	1
22	901893	WASHER, Handle to shaft	1	51	173542	SHIFT GEAR & ARMS ASSY	1
23	123533	SCREW, Knob to handle	2	52	302407	WASHER, Mounting screws	3
24	123290	SCREW, Handle to shaft	1	53	308545	SCREW, Switch to housing	1
25	123293	COVER, Handle	1	*	308808	TERMINAL	1
26	123443	SPRING, Neutral lock	3	*	173600	LONG LIFE CABLE ADAPTER KIT	1
27	123536	GROMMET, Trim switch	1				
28	173478	THROTTLE CAM & ARMS ASSY	1				
29	123312	SCREW, Mounting flange	3				

* Not Shown

REMOTE CONTROL ASSEMBLY - BINNACLE MOUNT



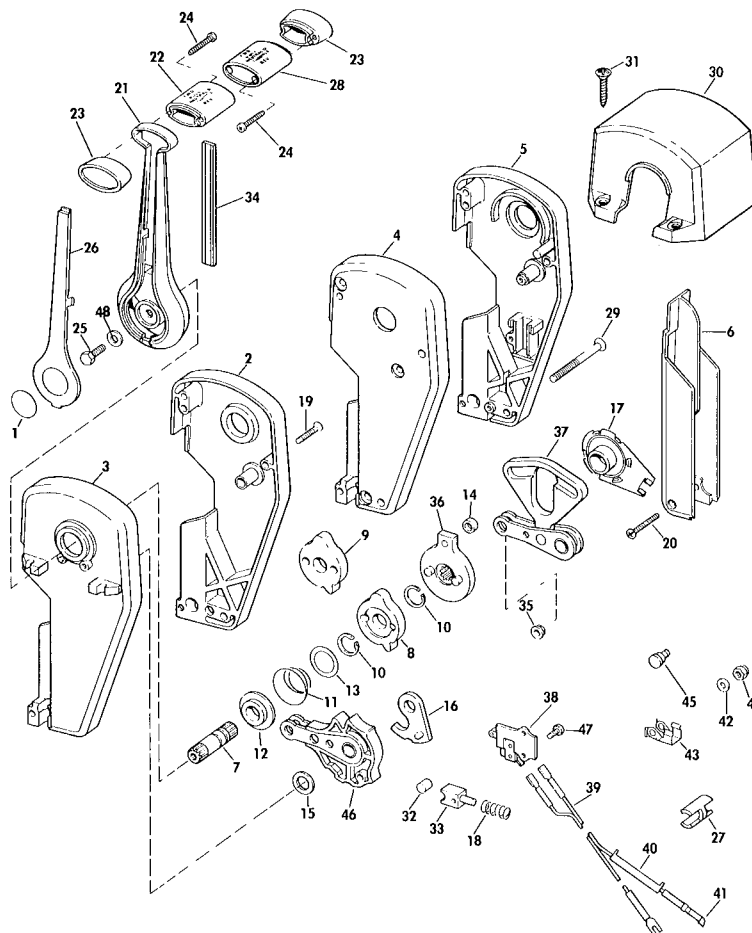
814082

SD0144

REF NO	PART NO	NAME OF PART	QTY PER ASSY	REF NO	PART NO	NAME OF PART	QTY PER ASSY
*	173646	REMOTE CONTROL ASSY -BINNACLE MOUNT, Sgl lever with trim		28	901893	WASHER, Screw, handle	1
1	123315	APPLIQUE	1	29	123324	RETAINER, Trim leads	1
2	123246	HOUSING, Control	1	30	123340	SCREW, Retainer	1
3	123247	HOUSING, Control	1	31	123341	ROLLER, Detent	1
4	173598	TRAY	1	32	123342	SHOE, Detent roller	1
5	123261	SHAFT, Remote control	1	33	123343	TRIM INSERT	1
6	123496	DRIVE GEAR, Shift	1	34	123350	BUSHING	2
7	123264	RETAINING RING, Drive gear	2	35	173571	THROTTLE HUB ASSY	1
8	123265	SPRING, Drive gear	1	36	173478	THROTTLE CAM & ARM ASSY	1
9	123266	BUSHING, Shaft to housing	1	37	173480	NEUTRAL START SWITCH ASSY	1
10	123267	WASHER, Return spring	1	38	173648	TRIM SWITCH & LEAD ASSY	1
11	123268	ROLLER, Throttle cam	1	39	313005	TERMINAL	3
12	123269	WASHER, Shift arm	1	40	510628	SLEEVE	1
13	123270	CAM, Neutral switch	1	41	173572	LEAD ASSY, Neutral start switch	1
14	173587	FRICTION CONTROL ASSY	1	42	303806	TUBING	1
15	909859	SPRING, Detent	1	43	308808	TERMINAL	1
16	123273	SCREW, Control housing	3	*	173581	CABLE MOUNT HARDWARE KIT	1
17	123274	SCREW, Tray to housing	1	44	306561	WASHER	2
18	123278	HANDLE	1	45	123140	RETAINER CLIP	1
19	123539	KNOB, Binnacle	1	46	323776	CLEVIS PIN	2
20	123535	KNOB, Trim switch	1	47	554427	NUT	2
21	308545	SCREW, Switch to housing		48	173542	SHIFT GEAR & ARMS ASSY	1
22	123533	SCREW, Knob to handle	2	*	308808	TERMINAL	1
23	123290	SCREW, Handle to shaft	1	*	173600	LONG LIFE CABLE ADAPTER KIT	1
24	123610	COVER, Handle	1				
25	123536	GROMMET, Trim switch	1				
26	123320	COVER	1				
27	123322	SCREW, Control mounting	4				

* Not Shown

REMOTE CONTROL ASSEMBLY BINNACLE MOUNT - DUAL LEVER



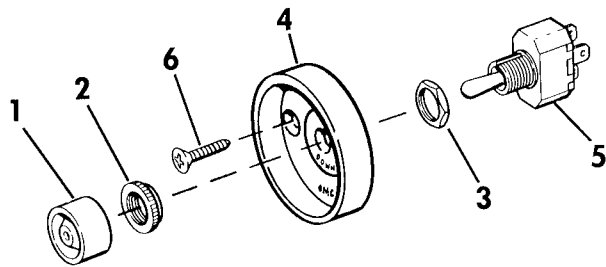
802217

SD0145

REF NO	PART NO	NAME OF PART	QTY PER ASSY	REF NO	PART NO	NAME OF PART	QTY PER ASSY
*	173647	REMOTE CONTROL ASSY , Binnacle mount, dual lever	1	26	123292	COVER, Handle	2
1	123315	APPLIQUE	1	27	123439	SPACER, Control cables	1
2	123245	HOUSING	1	28	123539	KNOB, Binnacle, port	1
3	123246	HOUSING	1	29	123310	SCREW, Binnacle assy	3
4	123248	HOUSING	1	30	123321	COVER, Mechanism	1
5	123249	HOUSING	1	31	123322	SCREW, Control mounting	4
6	173598	TRAY, Control housing	2	32	123341	ROLLER, Detent	2
7	123261	SHAFT, Remote control	2	33	123342	SHOE, Detent roller	2
8	123496	DRIVE GEAR, Starboard	1	34	123343	TRIM, Insert	2
9	123497	DRIVE GEAR, Port	1	35	123350	BUSHING	4
10	123264	RETAINING RING	4	36	173571	THROTTLE HUB ASSY	2
11	123265	SPRING, Drive gear return	2	37	173478	THROTTLE CAM & ARMS ASSY	2
12	123266	BUSHING, Shaft to housing	2	38	173480	NEUTRAL START SWITCH	2
13	123267	WASHER, Return spring	2	39	173572	LEAD ASSY	2
14	123268	ROLLER, Throttle cam	2	40	303806	TUBING	1
15	123269	WASHER, Shift arm	2	41	308808	TERMINAL	1
16	123270	CAM, Neutral switch	2	*	173581	CABLE MTG HARDWARE KIT	2
17	173587	FRICTION CONTROL	2	42	306561	WASHER	2
18	909859	SPRING, Detent	2	43	123140	RETAINER CLIP	1
19	123273	SCREW, Control housing	6	44	554427	NUT	2
20	123274	SCREW, Tray to housing	2	45	323776	CLEVIS PIN	2
21	123278	HANDLE, Side mount	2	46	173542	SHIFT GEAR & ARM ASSY	2
22	123540	KNOB, Binnacle, starboard	1	47	308545	SCREW	2
23	123532	END CAP, Knob	2	*	308808	TERMINAL	2
24	123533	SCREW, Knob to handle	4	48	901893	WASHER	2
25	123290	SCREW, Handle to shaft	2	*	173600	LONG LIFE ADAPTER KIT	2

* Not Shown

SELEC TRIM®/TILT SWITCH

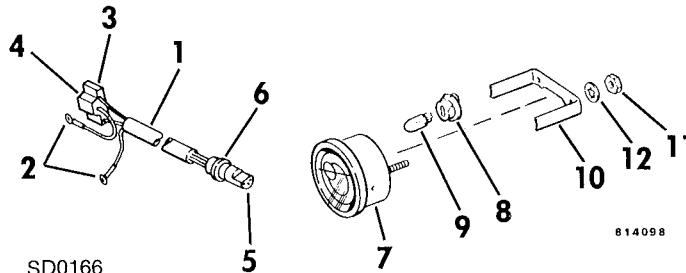


814097

SD0154

REF NO	PART NO	NAME OF PART	QTY PER ASSY
1	310781	COVER	1
2	310782	NUT	1
3	900185	NUT	1
4	909395	BEZEL, Trim	1
5	976443	POWER TILT/TRIM SWITCH	2
6	122481	SCREW, Mounting bezel	2

SELEC TRIM® GAUGE & CABLE

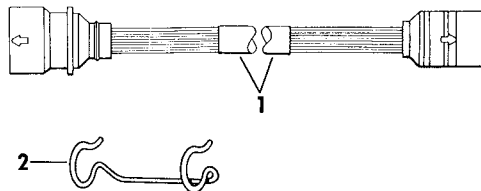


814098

SD0166

REF NO	PART NO	NAME OF PART	QTY PER ASSY
1	981448	CABLE ASSEMBLY	1
2	204036	RING TERMINAL	2
3	311742	CONNECTOR	1
4	309433	TERMINAL, Housing	3
5	581656	SOCKET ASSEMBLY	3
6	511990	CONNECTOR	1
7	981300	TRIM POSITION INDICATOR GAUGE KIT	1
8	122553	SOCKET	1
9	122552	BULB	1
10	909693	BRACKET	1
11	304753	NUT	2
12	306992	LOCKWASHER	2

EXTENSION HARNESS - INSTRUMENTS



33819

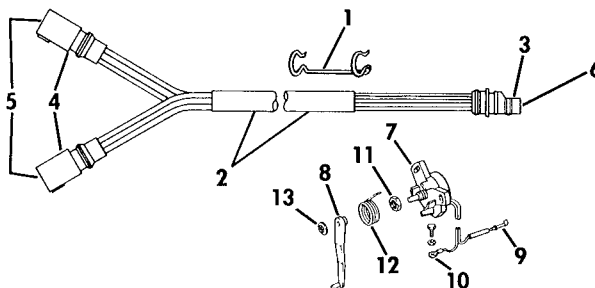
SD0159

REF NO	PART NO	NAME OF PART	QTY PER ASSY
1	173771	CABLE ASSEMBLY, 10 ft	1
2	315182	CLAMP	1

SECOND STATION CABLE KIT - TILT AND TRIM

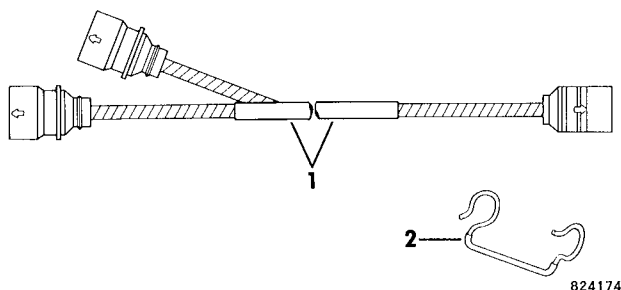
SD0152

REF NO	PART NO	NAME OF PART	QTY PER ASSY
1	322548	RETAINER	3
2	982553	CONNECTOR ASSEMBLY	1
3	511990	CONNECTOR	1
4	511465	CONNECTOR	1
5	511469	PIN	6
6	581656	SOCKET ASSEMBLY	3
7	983016	SENDING UNIT	1
8	910152	ARM	1
9	308808	TERMINAL	1
10	114208	RING TERMINAL	1
11	320689	NUT	1
12	511528	SPRING	1
13	511527	RETAINER	1



814016

SECOND STATION CABLE KIT - INSTRUMENTS



SD0153

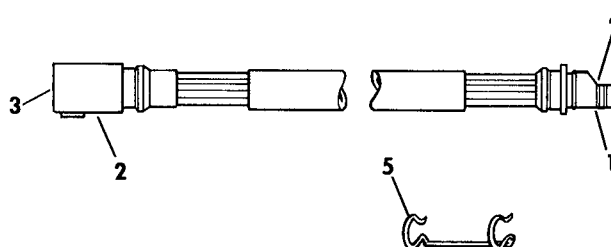
REF NO	PART NO	NAME OF PART	QTY PER ASSY
1	983017	CABLE ASSEMBLY	1
2	315182	CLAMP	2

EXTENSION CABLE - TRIM

SD0164

REF NO	PART NO	NAME OF PART	QTY PER ASSY
*	981445	CABLE ASSEMBLY, 10 ft	1
1	511990	CONNECTOR	1
2	511465	CONNECTOR	1
3	511469	PIN	3
4	581656	SOCKET ASSEMBLY	3
5	322548	RETAINER	1

* Not Shown



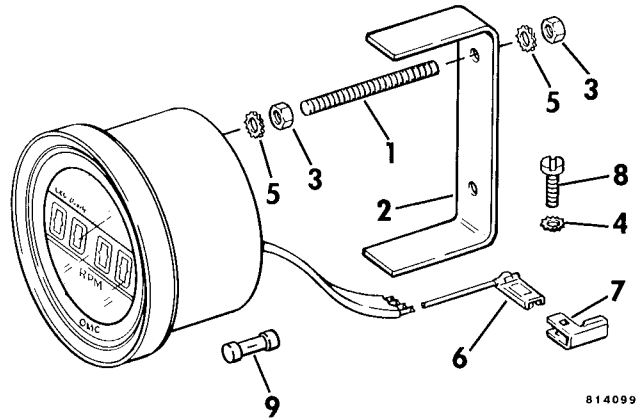
84410

QUARTACH™ TACHOMETER - FLUSH MOUNT

SD0150

REF NO	PART NO	NAME OF PART	QTY PER ASSY
*	173712	QUARTACH™ TACHOMETER	1
1	123641	STUD, Mounting	2
2	123642	BRACKET, Mounting	1
3	133079	NUT, Mounting	4
4	303916	LOCKWASHER, Ground	1
5	306991	LOCKWASHER, Mounting	4
6	309437	FLAG TERMINAL	1
7	319984	ADAPTOR	1
8	510338	SCREW, Ground	1
9	123981	FUSE	1

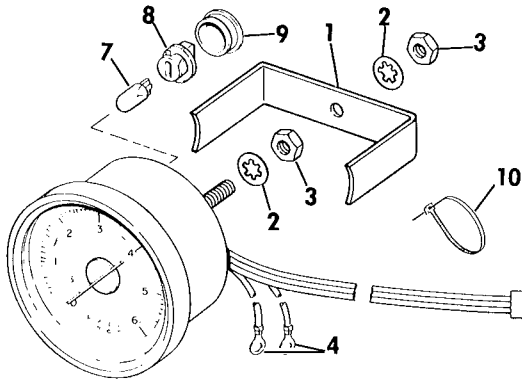
* Not Shown



814099

TACHOMETER KIT - PLUG IN

SD0151



92143

* Not Shown

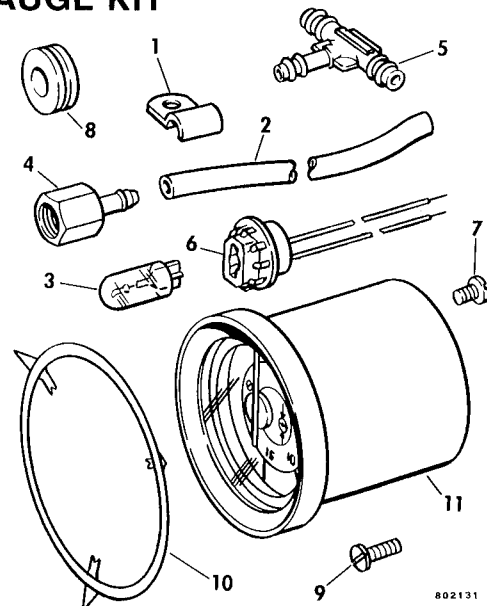
REF NO	PART NO	NAME OF PART	QTY PER ASSY
*	173604	TACHOMETER KIT - 6000 RPM BLACK BEZEL	1
1	122558	BRACKET, Mounting	1
2	306992	LOCKWASHER	2
3	304753	NUT	2
4	204036	RING TERMINAL	2
5	511465	CONNECTOR	1
6	511469	PIN	3
7	122552	BULB	1
8	122553	SOCKET, Bulb	1
9	122916	COVER, Bulb socket	1
10	320107	TIE STRAP	1

WATER PRESSURE GAUGE KIT

SD0160

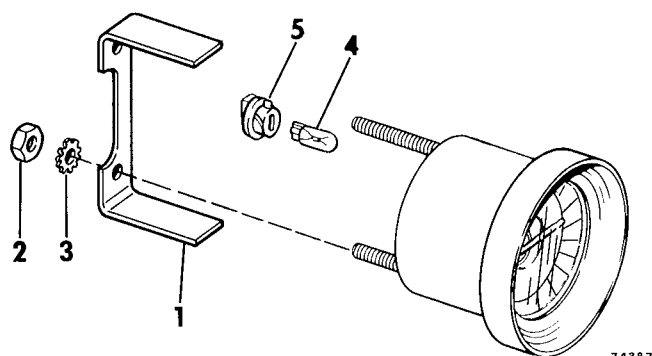
REF NO	PART NO	NAME OF PART	QTY PER ASSY
*	173660	WATER PRESSURE GAUGE KIT	1
1	120001	CLAMP, Hose	5
2	121829	HOSE	1
3	122552	BULB	1
4	123552	HOSE CONNECTOR	1
5	123553	TEE CONNECTOR	1
6	172952	LIGHT SOCKET	1
7	306915	SCREW	2
8	307417	GROMMET	1
9	310115	SCREW	5
10	123550	LOCKING RING	1
11	173688	WATER PRESSURE GAUGE ASSY	1
*	123690	REDUCER, Water pressure line	1
*	123692	CONNECTOR, Water pressure line	1

* Not Shown



802131

FUEL GAUGE KIT

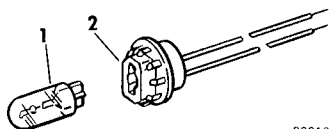


SD0149

REF NO	PART NO	NAME OF PART	QTY PER ASSY
*	172992	FUEL GAUGE KIT	1
1	909693	BRACKET	1
2	304753	NUT	2
3	306992	LOCKWASHER	2
4	122552	BULB	1
5	122553	SOCKET	1

* Not Shown

SPEEDOMETER LIGHT KIT



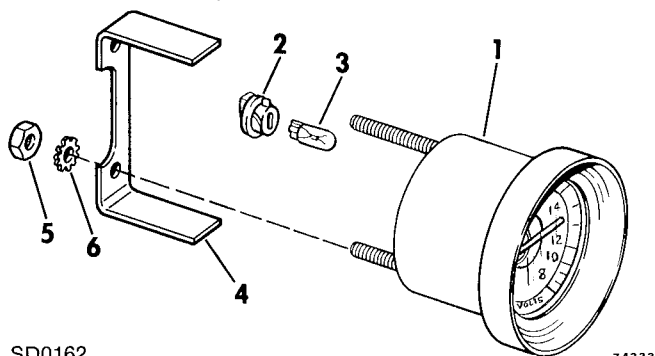
802130

OP0403C

REF NO	PART NO	NAME OF PART	QTY PER ASSY
*	172951	SPEEDOMETER KIT	1
1	122552	BULB	1
2	172952	BULB SOCKET	1

* Not Shown

VOLTMETER KIT

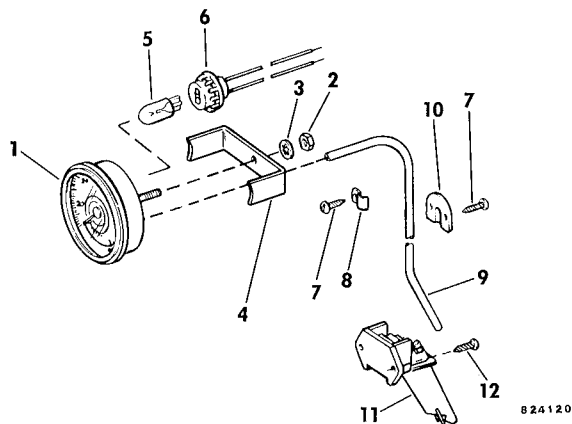


74333

SD0162

REF NO	PART NO	NAME OF PART	QTY PER ASSY
1	172998	VOLTMETER KIT, Black bezel	1
2	122553	SOCKET	1
3	122552	BULB	1
4	909693	BRACKET	1
5	304753	NUT	2
6	306992	LOCKWASHER	2

SPEEDOMETER KIT - FLUSH MOUNT



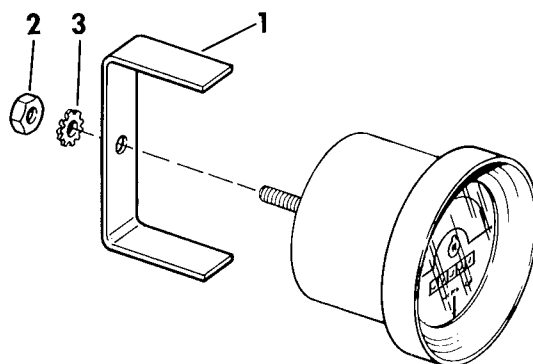
824120

SD0161

REF NO	PART NO	NAME OF PART	QTY PER ASSY
*	173750	SPEEDOMETER KIT, 65 mph	1
1	173783	SPEEDOMETER ASSY, 65 mph	1
2	304753	NUT	1
3	306992	LOCKWASHER	1
4	121710	BRACKET	1
5	122552	BULB	1
6	172952	LIGHT SOCKET	1
7	310115	SCREW	9
8	120001	HOSE CLAMP	5
9	121829	HOSE, Speedometer	1
10	121828	GUARD, Thru transom	1
11	173623	PITOT TUBE ASSEMBLY	1
12	122822	SCREW, Pitot mounting	2-3

* Not Shown

TIME INDICATOR KIT



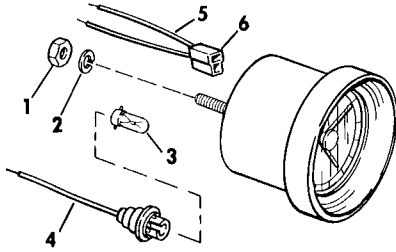
94043

SD0163

REF NO	PART NO	NAME OF PART	QTY PER ASSY
*	173516	TIME INDICATOR KIT	1
1	123510	BRACKET	1
2	204046	NUT	1
3	303916	LOCKWASHER	1

* Not Shown

CLOCK KIT



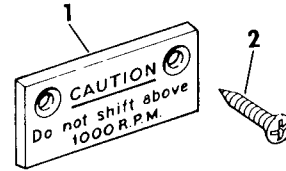
84408

SD0165

REF NO	PART NO	NAME OF PART	QTY PER ASSY
*	173336	CLOCK KIT, Black bezel	1
1	304753	NUT	1
2	306992	LOCKWASHER	1
3	122552	BULB	1
4	172889	SOCKET	1
5	172887	POWER LEAD ASSEMBLY	1
6	900258	CONNECTOR	1

* Not Shown

CAUTION PLATE KIT



32814

SD0167

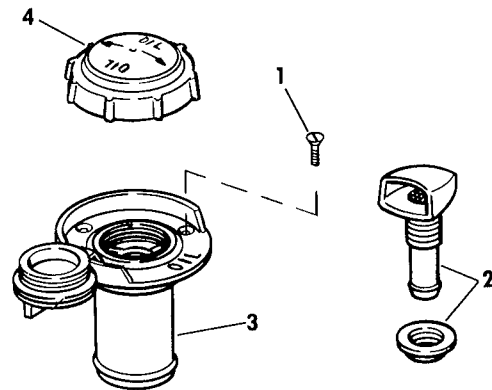
REF NO	PART NO	NAME OF PART	QTY PER ASSY
1	980479	CAUTION PLATE KIT	1
2	122295	SCREW, Plate	2

DECK PLATE, REMOTE OIL FILL

SD0155

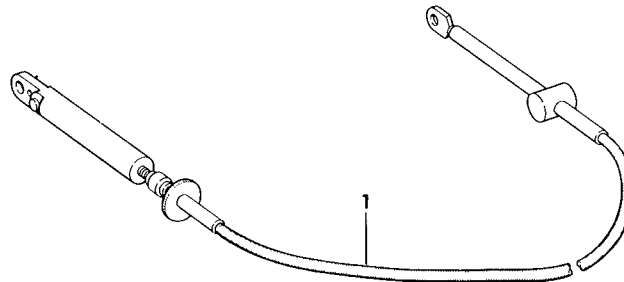
REF NO	PART NO	NAME OF PART	QTY PER ASSY
*	173856	DECK PLATE, Remote oil fill	1
1	123678	SCREW, Mounting	3
2	173861	VENT	1
3	173908	DECK PLATE, Oil fill	1
4	173936	CAP, Oil fill	1
*	123956	FILL HOSE	AR
*	123955	VENT HOSE	AR

* Not Shown



814106

OMC SNAP-IN™ CABLES



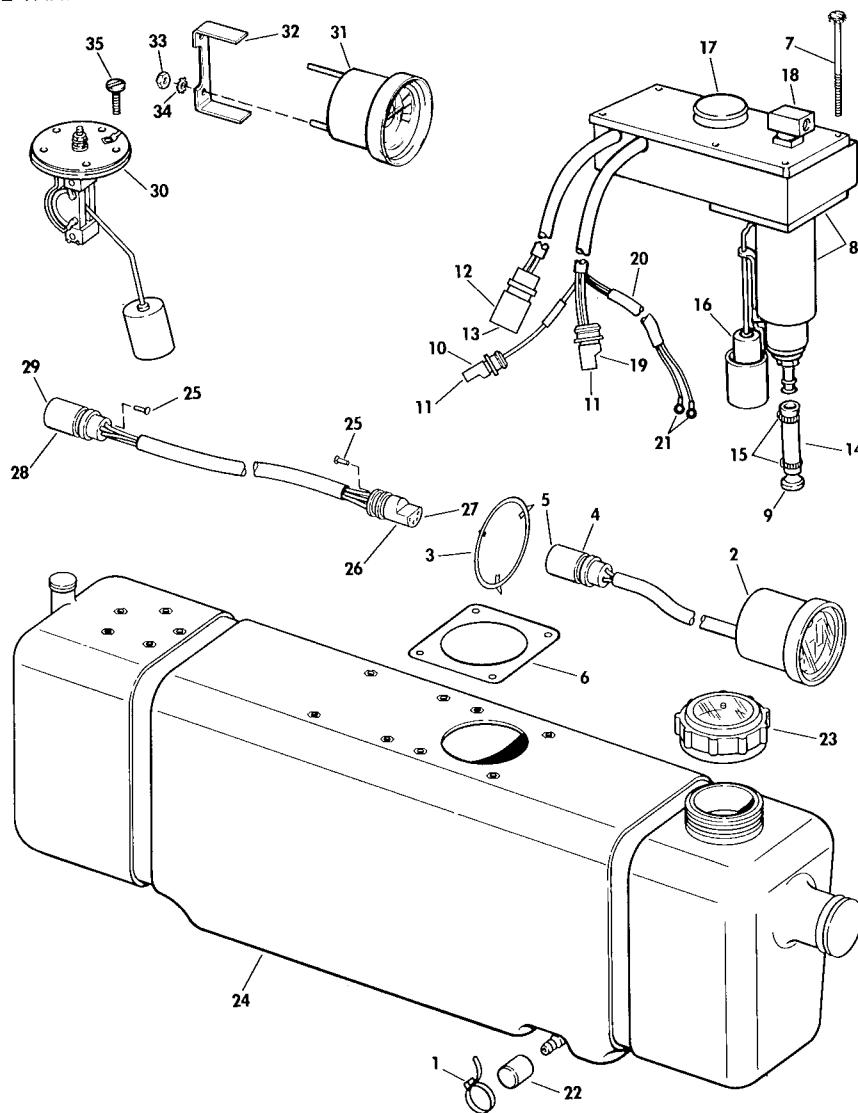
94050

SD0168

REF NO	PART NO	NAME OF PART	QTY PER ASSY	REF NO	PART NO	NAME OF PART	QTY PER ASSY
1	173110	CABLE ASSEMBLY, 10 ft	1	1	173126	CABLE ASSEMBLY, 26 ft	1
1	173111	CABLE ASSEMBLY, 11 ft	1	1	173128	CABLE ASSEMBLY, 28 ft	1
1	173112	CABLE ASSEMBLY, 12 ft	1	1	173130	CABLE ASSEMBLY, 30 ft	1
1	173113	CABLE ASSEMBLY, 13 ft	1	1	173132	CABLE ASSEMBLY, 32 ft	1
1	173114	CABLE ASSEMBLY, 14 ft	1	1	173134	CABLE ASSEMBLY, 34 ft	1
1	173115	CABLE ASSEMBLY, 15 ft	1	1	173136	CABLE ASSEMBLY, 36 ft	1
1	173116	CABLE ASSEMBLY, 16 ft	1	1	173138	CABLE ASSEMBLY, 38 ft	1
1	173117	CABLE ASSEMBLY, 17 ft	1	1	173140	CABLE ASSEMBLY, 40 ft	1
1	173118	CABLE ASSEMBLY, 18 ft	1	1	173142	CABLE ASSEMBLY, 42 ft	1
1	173119	CABLE ASSEMBLY, 19 ft	1	1	173144	CABLE ASSEMBLY, 44 ft	1
1	173120	CABLE ASSEMBLY, 20 ft	1	1	173146	CABLE ASSEMBLY, 46 ft	1
1	173122	CABLE ASSEMBLY, 22 ft	1	1	173148	CABLE ASSEMBLY, 48 ft	1
1	173124	CABLE ASSEMBLY, 24 ft	1	1	173150	CABLE ASSEMBLY, 50 ft	1

ECONOMIXER™

3.5 OR 7 GALLON OIL TANK



822153

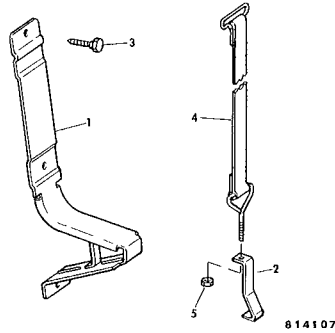
SD0200

REF NO	PART NO	NAME OF PART	QTY PER ASSY	REF NO	PART NO	NAME OF PART	QTY PER ASSY
*	173869	ECONOMIXER ASSY WITHOUT OIL TANK	1	17	123990	CAP	1
*	173870	ECONOMIXER ASSY WITH 3.5 GALLON OIL TANK	1	18	123941	FITTING, Oil line	1
*	173871	ECONOMIXER ASSY WITH 7 GALLON OIL TANK	1	19	511991	CONNECTOR	1
1	124249	TIE STRAP, Drain	1	20	510781	TUBING	1
2	173875	INSTRUMENT ASSY, Oil flow	1	21	114208	RING TERMINAL	2
3	123550	LOCKING RING	1	22	124072	CAP, Drain	1
4	511991	CONNECTOR	1	#23	173851	CAP, Oil tank	1
5	581656	SOCKET ASSEMBLY	4	24	173857	OIL TANK, 3.5 gallon	1
6	123906	GASKET, Pump housing to tank	1	24	173878	OIL TANK, 7 gallon	1
7	123972	SCREW, Pump to tank	4	*	173992	10' CABLE EXTENSION KIT	1
8	173850	OIL PUMP ASSEMBLY	1	25	511496	PLUG, Connector	2
9	123905	FILTER	1	26	511991	CONNECTOR	1
10	511989	CONNECTOR	1	27	581656	SOCKET, Contact	3
11	581656	SOCKET	6	28	511449	CONNECTOR	1
12	511449	CONNECTOR	1	29	511469	PIN, Contact	3
13	511469	PIN	4	*	173885	OIL LEVER GAUGE & SENDER	1
14	123951	HOSE, Oil pickup	1	30	173948	SENDER UNIT	1
15	320107	TIE STRAP	2	31	173949	GAUGE ASSEMBLY	1
16	173994	FLOAT ASSY	1	32	122558	BRACKET	1
				33	304753	NUT	1
				34	306992	WASHER	1
				35	308545	SCREW, Sender to tank	5

* Not Shown

Do Not Use With Deck Plate Kit

OIL TANK MOUNT KIT, OMC ECONOMIXER™

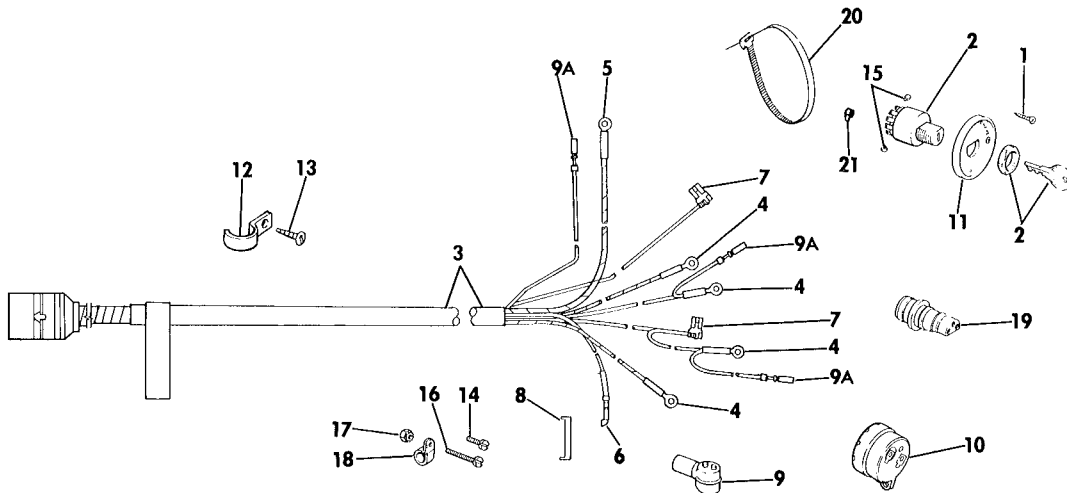


SD0156

REF NO	PART NO	NAME OF PART	QTY PER ASSY	REF NO	PART NO	NAME OF PART	QTY PER ASSY
*	173887	TRANSOM MOUNT KIT - 3 5 GALLON TANK	1	1	124058	MOUNTING BRACKET, Floor mount ①	2
*	173888	TRANSOM MOUNT KIT - 7 GALLON TANK	1	1	124067	MOUNTING BRACKET, Floor mount ②	2
*	173889	FLOOR MOUNT KIT - 3 5 GALLON TANK	1	2	124065	ANCHOR, Strap	2
*	173890	FLOOR MOUNT KIT - 7 GALLON TANK	1	3	124073	LAG SCREW	4,6
1	124063	MOUNTING BRACKET, Transom mount ①	2	4	173929	STRAP ASSY, Transom mount ①	2
1	124062	MOUNTING BRACKET, Transom mount ②	2	4	173931	STRAP ASSY, Transom mount ②	2
				4	173928	STRAP ASSY, Floor mount ①	2
				4	173930	STRAP ASSY, Floor mount ②	2
				5	204046	NUT, Strap anchor	4

* Not Shown ① 3 5 Gallon Tank ② 7 Gallon Tank

WIRING KIT - SINGLE LEVER CONTROLS



SD0185

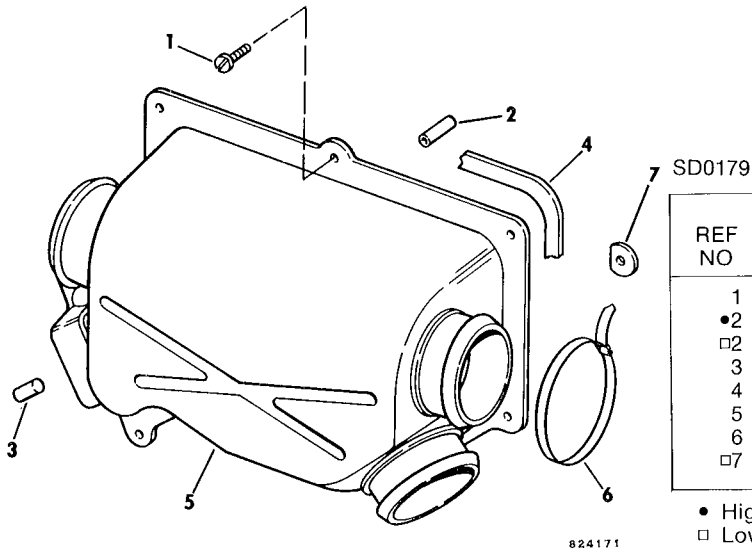
824185

REF NO	PART NO	NAME OF PART	QTY PER ASSY	REF NO	PART NO	NAME OF PART	QTY PER ASSY
*	173769	WIRING KIT, Single lever controls	1	10	389263	HORN ASSEMBLY	1
1	122481	SCREW, Panel mounting	2	11	323272	MOUNTING PANEL PLATE	1
†2	391033	SWITCH & KEY	1	12	304494	CLAMP	4
3	173826	INSTRUMENT CABLE ASSEMBLY	1	13	305009	SCREW	4
4	510780	RING TERMINAL	3	14	306286	SCREW, Clamp to dash	2
5	204038	RING TERMINAL	1	15	306559	SCREW, Terminals	6
6	308808	TERMINAL	1	16	307190	SCREW, Clamp to dash	1
7	309437	FLAG TERMINAL	2	17	308335	NUT, Clamp screw	2
8	316198	TUBING	1	18	316669	CLAMP, Cable to dash	2
9	322815	COVER	1	19	511990	3 PIN CONNECTOR	1
9A	581656	SOCKET	3	20	320107	TIE STRAP	3
				21	123975	COVER, Switch	1

* Not Shown

† See Service Bulletin for Key Ordering Information

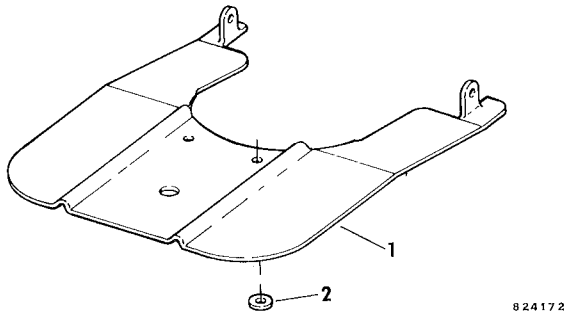
AIR INLET KIT



REF NO	PART NO	NAME OF PART	QTY PER ASSY
1	910878	SCREW, Cover to transom	7
•2	910882	CAP, Screw, transom bracket, large	8
□2	911071	CAP, Screw, transom bracket, small	6
3	910883	PLUG, Oiler lead hole	1
4	910884	SEAL, Cover to transom	1
5	910885	COVER, Transom opening	1
6	902254	TIE STRAP	3
□7	911072	WASHER, Screw, transom bracket	2

- High Mount Transom Bracket Only
- Low Mount Transom Bracket Only

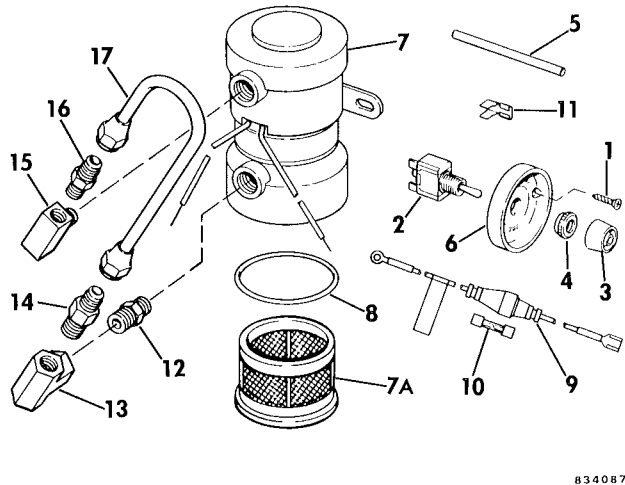
SPRAY PLATE KIT



SD0180

REF NO	PART NO	NAME OF PART	QTY PER ASSY
1	173953	SPRAY PLATE KIT	1
2	305847	SPACER	2

ELECTRIC PRIMER PUMP ASSY.

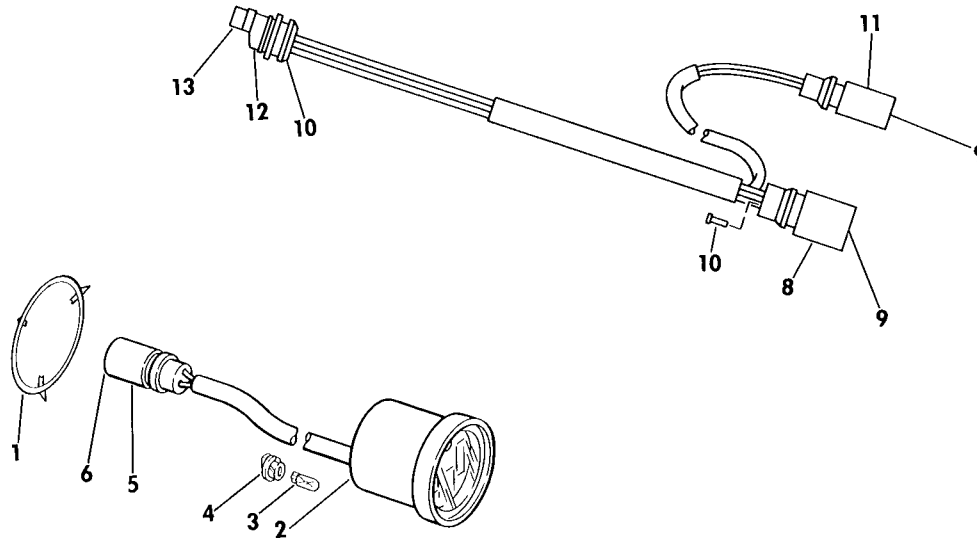


SD0208

REF NO	PART NO	NAME OF PART	QTY PER ASSY
*	394301	ELECTRIC PRIMER PUMP	1
1	122481	SCREW, Bezel	2
2	393125	SWITCH, Primer	1
3	310781	COVER, Switch	1
4	310782	NUT, Switch	1
5	320597	TUBING	3
6	327990	BEZEL, Primer switch	1
7	392752	PRIMER PUMP ASSY	1
7A	328072	FILTER, Pump	1
8	302588	O-RING	1
9	392769	LEAD ASSY	1
10	512129	FUSE, 5 amp	1
11	511828	TERMINAL	1
12	329587	FITTING, Reducer	1
13	329589	TEE, Large	1
14	394302	CHECK VALVE	1
15	329588	TEE, Small	1
16	329586	FLANGE, Connection	1
17	394303	TUBE & NUT ASSY	1

* Not Shown

ECONOMIXER™ STATUS INDICATOR - SECOND STATION



824186

SD0183

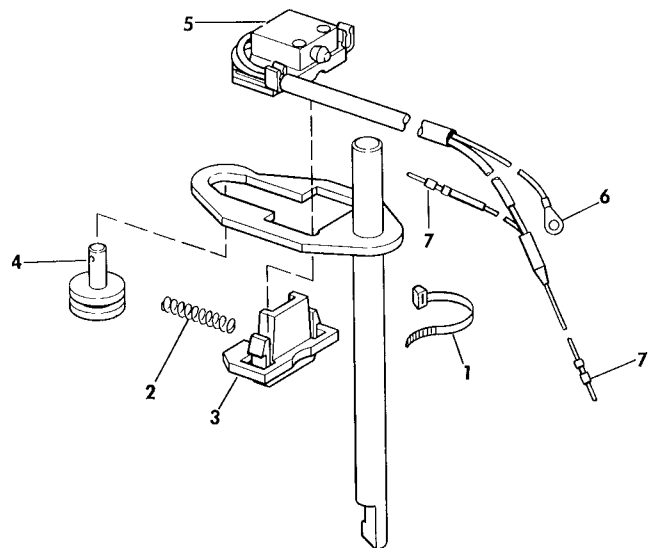
REF NO	PART NO	NAME OF PART	QTY PER ASSY
1	123550	RING, Locking	1
2	173981	INSTRUMENT ASSY	1
3	122552	BULB	1
4	122553	SOCKET	1
5	511989	CONNECTOR	1
6	581656	SOCKET	2
7	173983	CABLE ASSY	1
8	511449	CONNECTOR	1
9	511469	PIN	5
10	511496	PLUG	2
11	511616	CONNECTOR	1
12	511991	CONNECTOR	1
13	581656	SOCKET	3

SHIFT ASSIST KIT

SD0184

REF NO	PART NO	NAME OF PART	QTY PER ASSY
*	983202	SHIFT LEVER AND SWITCH ASSY	1
1	320107	TIE STRAP	1
2	911054	SPRING	1
3	911057	RETAINER	1
4	911058	PIN	1
5	983197	SWITCH & SLIDER	1
6	510818	TERMINAL	1
7	511469	PIN	2
*	304051	WASHER	1
*	306387	COTTER PIN	1

* Not Shown



824187

Outboard Marine Corporation
100 Sea Horse Drive
Waukegan, Illinois 60085 U S A
ATTN Customer Service Dept

Outboard Marine Belgium N.V
Pathoekeweg 120
B-8000 Brugge
Belgium

Outboard Marine International, Inc
75 N.E. 179th Street
Miami, Florida 33162
U S A

Outboard Marine Corporation
of Canada Ltd
910 Monaghan Road
Peterborough, Ontario
Canada
K9J7B6

Outboard Marine Asia Ltd
T Y T L No 54
Tsing Yi Island
New Territories
Hong Kong

Outboard Marine Australia Pty. Ltd
84 Canterbury Road
Bankstown, N S W
Australia

OMC *Sea Drive*TM

MARKETED BY

OMC
DRIVE SYSTEMS

A PRODUCT GROUP OF OUTBOARD MARINE CORPORATION

3145 CENTRAL AVENUE ■ WAUKEGAN, ILLINOIS ■ 60085